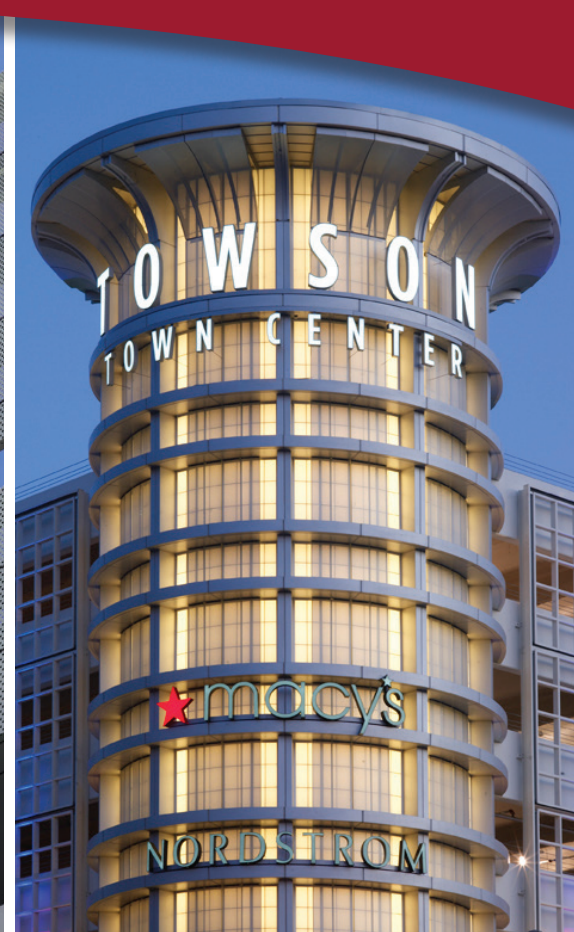
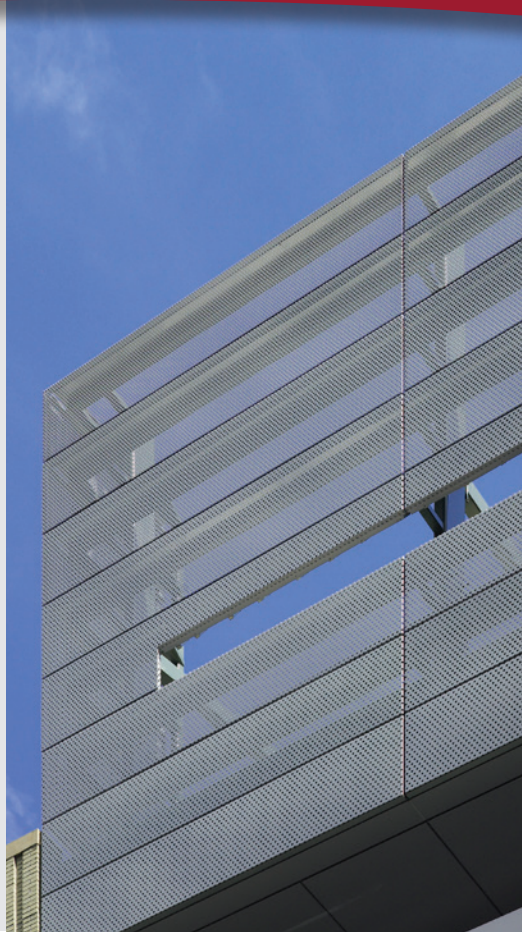
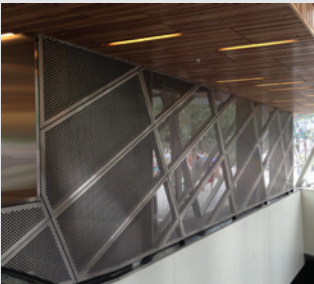


Metalwërks® Screenwalls are manufactured from a wide variety of materials, including formed or extruded metal profiles, perforated metal panels, woven architectural mesh, bar grille, or custom profiled extrusions. All Metalwërks Screenwall systems are engineered to ensure structural integrity from the outside face of the cladding element to the primary building structure. Metalwërks selects assembled components from only the highest quality architectural commodity producers.



FEATURES AND BENEFITS

- Visually complement or contrast with Metalwërks plate wall systems
- Unitized or knocked down depending on project logistics or installation preference
- Long life solid metal assemblies for ultimate durability, with damage-resistant finishes
- Post-finished or pre-finished assemblies
- Non-Combustible: minimal smoke or fuel contribution
- Avoids NFPA 285 complications by avoiding thermo-plastic cores
- All panel systems are reinforced/stiffened to resist deflection limits
- Dismountable or operable as desired
- 100% recyclable and manufactured from materials with high post-consumer/ industrial content which can contribute to LEED credits
- Exposed structural elements manufactured from non-ferrous aluminum or stainless steel that will not rust (unlike galvanized steel or AESS-coated steel)
- Virtually limitless palette of colors, finishes, and textures
- Aluminum: high performance finishes are post applied for the highest quality of coverage and uniformity

- Available in no-VOC powder coated finishes. Non-toxic and non-combustible.
- Finish warranties up to 20 years (coated aluminum). Consult Metalwërks for limitations.

USES

- Shading, heat reduction, and ventilation for parking garages, glass curtain wall, or glazed assemblies
- Concealing mechanical equipment
- Backdrop for branding, murals, signage, or banners
- Add texture to an exterior face or create dramatic surfaces for unique building designs
- Enhance privacy for occupants or neighboring properties



PERFORATED OPTIONS

METAL SUBSTRATE AND FINISH OPTIONS

ALUMINUM PLATE

3003-H14 aluminum alloy-temper

Thickness: 0.125" (3.18 mm) standard, 0.188" (4.78 mm), 0.25" (6.35 mm) options. Consult Metalwërks for additional options.

Finishes: Kynar® or architectural TGIC Polyester powder coating

STAINLESS STEEL

T304 or T316 for enhanced corrosion resistance

Thickness: 14 gauge (0.078") (1.98 mm) standard, 11 gauge (0.125") (3.18 mm), 12 gauge (0.109") (2.78 mm), 16 gauge (0.063") (1.60 mm) options

Finishes: #4, #6, #8, and non-directional satin in smooth or custom embossed patterns

ZINC

Consult with Metalwërks for options

PATTERNS

- Standard round, square holes subject to material selections
- Custom tool patterns and random spacings to match graphic designs
- With non-perforated borders

WIRE MESH OPTIONS

Custom and standard aluminum or stainless steel patterns and wire weave options

Opening areas: opaque to 80% open areas – standard 1", 1.5", 2" square options

Mounting methods with integrated mullions: Inset or Outset

Finishes: Kynar®, anodized aluminum, or architectural TGIC Polyester powder coating

EXTRUDED OPTIONS

TUBULAR ALUMINUM

Square standard sizes: 1" x 1" up to 6" x 6"

Rectangular standard sizes: 1" x 2" up to 2" x 8" – customizes up to 12" deep

Round sizes: 1"–6" diameter

Custom profiles & sizes: Available in lot sizes of minimum 1,000 ft² (or lbs)

Custom airfoil, trapezoid or tapered styles

FORMED OPTIONS

ALUMINUM PLATE

3003-H14 aluminum alloy-temper

Thickness: 0.125" (3.18 mm) standard, 0.188" (4.78 mm), 0.25" (6.35 mm) options. Consult Metalwërks for additional options.

Finishes: Kynar® or architectural TGIC Polyester powder coating

FLAT PLATE OPTIONS

0.125"–1" thick Aluminum

PANEL SIZES

Widths: 12" (305 mm) to 60" (1,524 mm)*

Lengths: 12" (305 mm) to 240" (6,096 mm)*

Depth: Varies

* Maximum panel size depends upon plate material, gauge, finish, and geometry

PANEL WEIGHT

Consult with Metalwërks for options

WARRANTY

Material & Workmanship: 1-year standard, with 2- or 5-year options

Finish Integrity: 10-year standard and up to 20-year for coated aluminum