

Arcwall is an economical drained and back-ventilated rain screen system for both walls and soffits manufactured from formed aluminum or stainless plate. The system combines excellent performance with a high design flexibility.

Arcwall panels can be flat, curved, or formed into custom 3D profiles and can be installed both horizontally and vertically. Horizontal reveals are also available in varying heights from 5/8" to 2".

The system is entirely dry-set with integrally formed interlocking longitudinal joints and simplified backup guttering. This includes formed panels with welded corners and factory-mounted j-hook extrusions for male-female engagement.

Arcwall may be installed over stud/sheathed walls, continuous masonry, concrete, or as the outer cladding in a wall assembly that incorporates continuous insulation and a suitable air and water barrier.



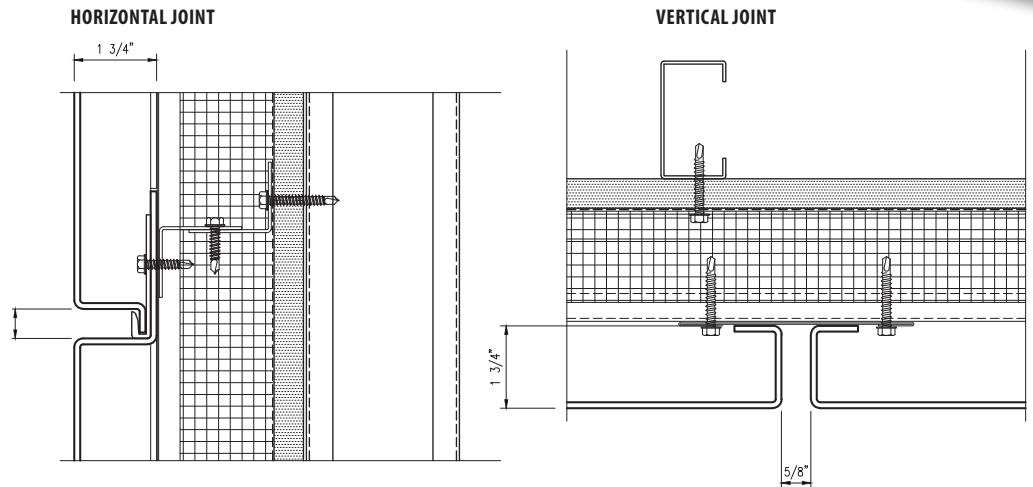
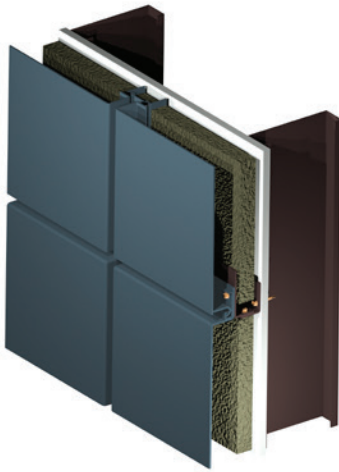
### DETAILS

- Manufactured from solid aluminum or stainless plate with integral panel returns formed from a single piece of metal
- Solid aluminum and stainless steel: high resistance to denting and puncturing, ideal for high-traffic or abusive areas
- Fully mitered and welded corners ground smooth for seamless appearance
- 0.625" (15.8 mm) standard horizontal and vertical joint with variable options
- Adjustable furring to address variable construction tolerances and ensuring vertical sealing to air and water barrier, minimizing shims
- Non-Combustible: minimal smoke or fuel contribution
- Avoids NFPA 285 complications by avoiding thermo-plastic cores
- All panel systems are reinforced/stiffened to resist deflection limits
- Vertical gutters channel water from horizontal gutters draining moisture to the exterior
- Panels install both horizontally and vertically
- Concealed fastened using corrosion-resistant self-tapping screws
- Aluminum: post-applied finishing for longterm performance and uniform aesthetic

- As rain screen systems rely on gravity to drain water, all skyward facing surfaces, copings, sloped conditions and all perimeters must be sealed
- 100% recyclable with high percentage of post-consumer and industrial content, which may contribute to LEED credits

### DESIGN OPTIONS

- Panels may be flat, curved, or custom 3D profiles
- Variable reveals: Horizontal 0.625" - 2" (15.88 mm - 50.8 mm); Vertical 0.25" - 2" (6.35 mm - 50.8 mm)
- Unlimited color options for aluminum plate
- Options for #4, #6, #8, and non-directional finishes for stainless plate
- Matching perforated and louvered panels
- Projecting eyebrows with integrated framing can be included
- Available shop-applied appliqués for accents
- May also be used for soffits, column, beam and pilaster cladding
- Optional back-cuts on formed panel edges for a sharper bend and crisper appearance



### METAL SUBSTRATE AND FINISH OPTIONS

#### ALUMINUM

##### 3003-H14 aluminum alloy-temper

**Thickness:** 0.125" (3.18 mm) standard and 0.188" (4.78 mm) option

**Finishes:** Kynar®, architectural TGIC Polyester powder coating, or anodized

#### STAINLESS STEEL

##### T304 or T316

**Thickness:** 14 gauge (0.078") (1.98 mm) standard, 16 gauge (0.063") (1.60 mm), 12 gauge (0.101") (2.78 mm) options

**Finishes:** #4, #6, #8, and non-directional satin in smooth or custom embossed patterns

### PANEL SIZES

**Widths:** 12" (305 mm) to 54" (1,371 mm)\*

**Lengths:** 12" (305 mm) to 160" (4,064 mm)\*

**Depth:** 1.75" (44.5 mm) minimum

\* Maximum panel size depends upon plate material, gauge, finish, and geometry

### PANEL WEIGHT RANGE

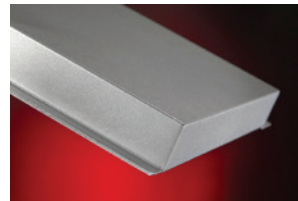
(dependent upon gauge and geometry)

**Aluminum:** 2.62 - 3.52 lbs./ft<sup>2</sup>

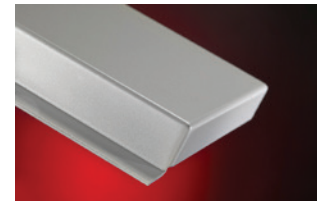
**Stainless Steel:** 4.64 - 5.913 lbs./ft<sup>2</sup>

Ranges provided for clarification. Consult with Metalwërks for further options.

#### SHARP CORNER



#### STANDARD CORNER



### ACCESSORIES

**Flashing:** 0.040" (1.016 mm) thick to 0.063" (1.60 mm) aluminum

**Coping:** Wall copings may be produced with the same material as the wall panel system

**Furring Channels:** As required for proper mounting of panels

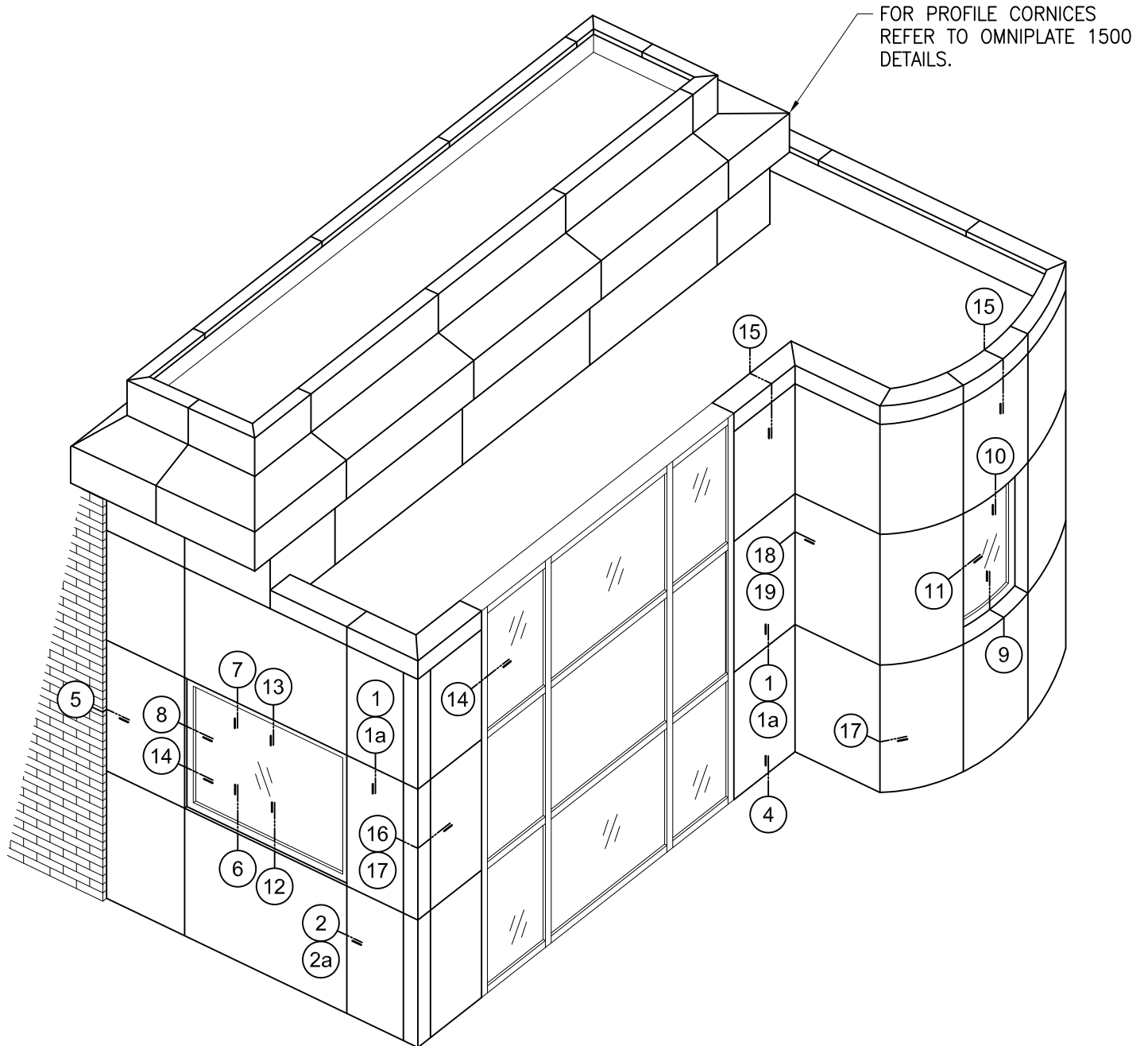
**Fasteners:** Type 304 stainless steel or cadmium-plated as recommended

**Shims:** High impact thermally-broken plastic shims to maintain co-planar surfaces

### WARRANTY

**Material & Workmanship:** 1-year standard, with 2- or 5-year options

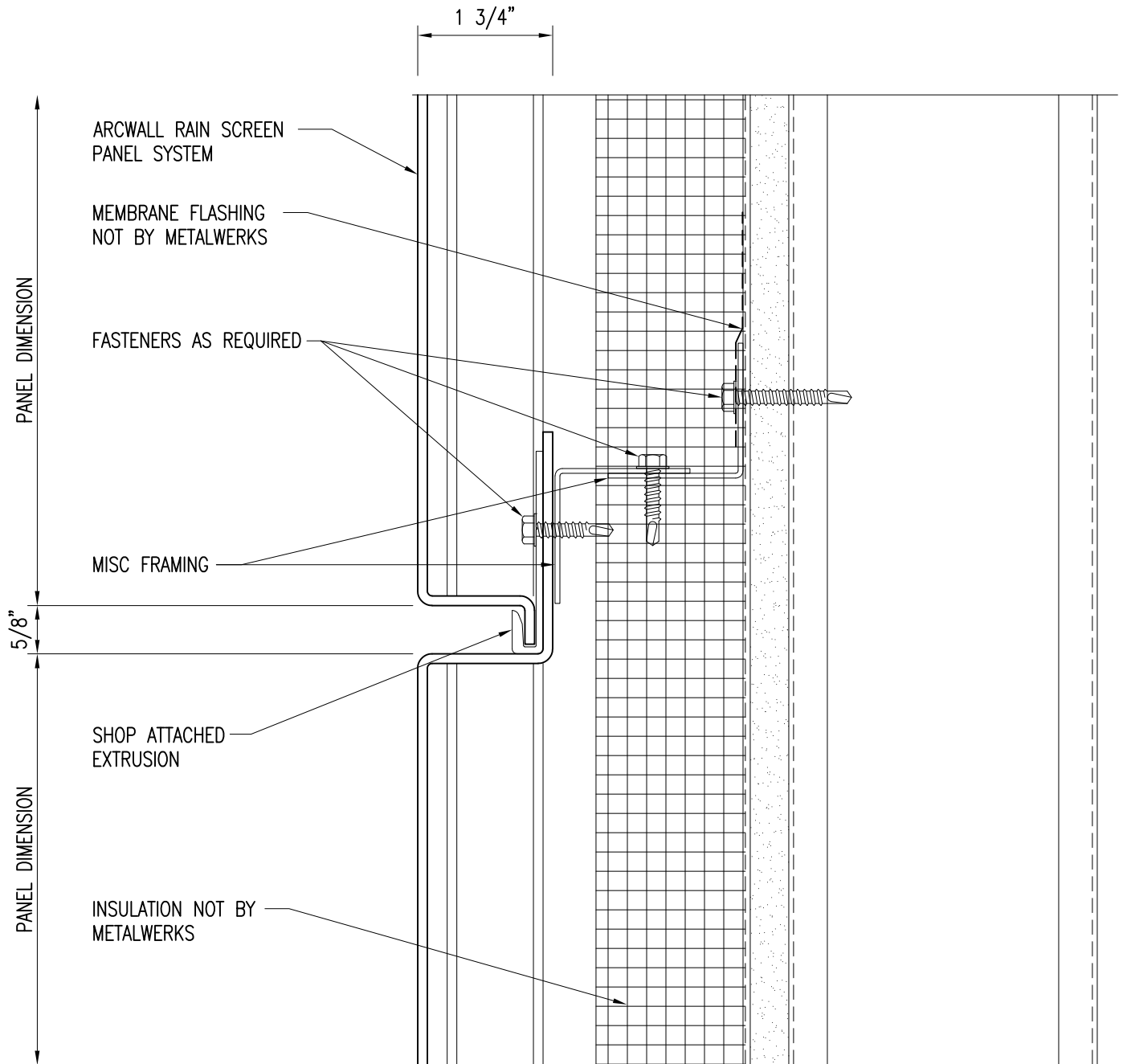
**Finish Integrity:** 10-year standard and up to 20-year for coated aluminum



## Table of Contents:

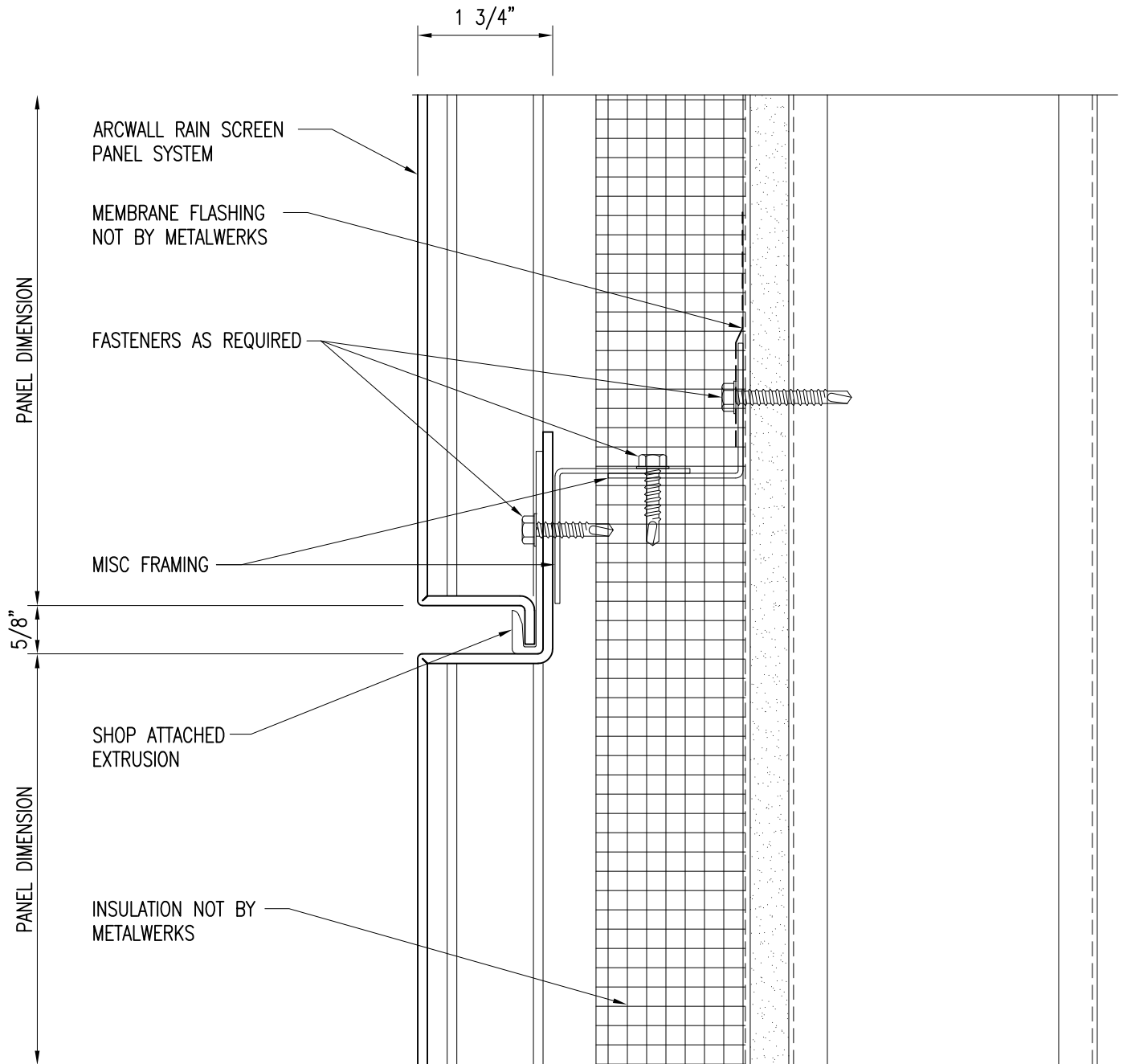
### DETAIL DESCRIPTION

- 1 Horizontal Joint
- 1a Horizontal Joint w/ Back Routed Edges
- 2 Vertical Joint
- 2a Vertical Joint w/ Back Routed Edges
- 3 Panel Stiffener
- 4 Panel Sill
- 5 Panel Jamb
- 6 Storefront Sill
- 7 Storefront Head
- 8 Storefront Jamb
- 9 Recessed Storefront Sill
- 10 Recessed Storefront Head
- 11 Recessed Storefront Jamb
- 12 Curtain Wall Sill
- 13 Curtain Wall Head
- 14 Curtain Wall Jamb
- 15 Coping
- 16 Outside Corner
- 17 Outside Mitered Corner
- 18 Inside Corner
- 19 Inside Mitered Corner



PRIMARY WALL CONSTRUCTION AND INSULATION NOT BY METALWERKS. 16 GAUGE METAL STUDS MINIMUM REQUIRED

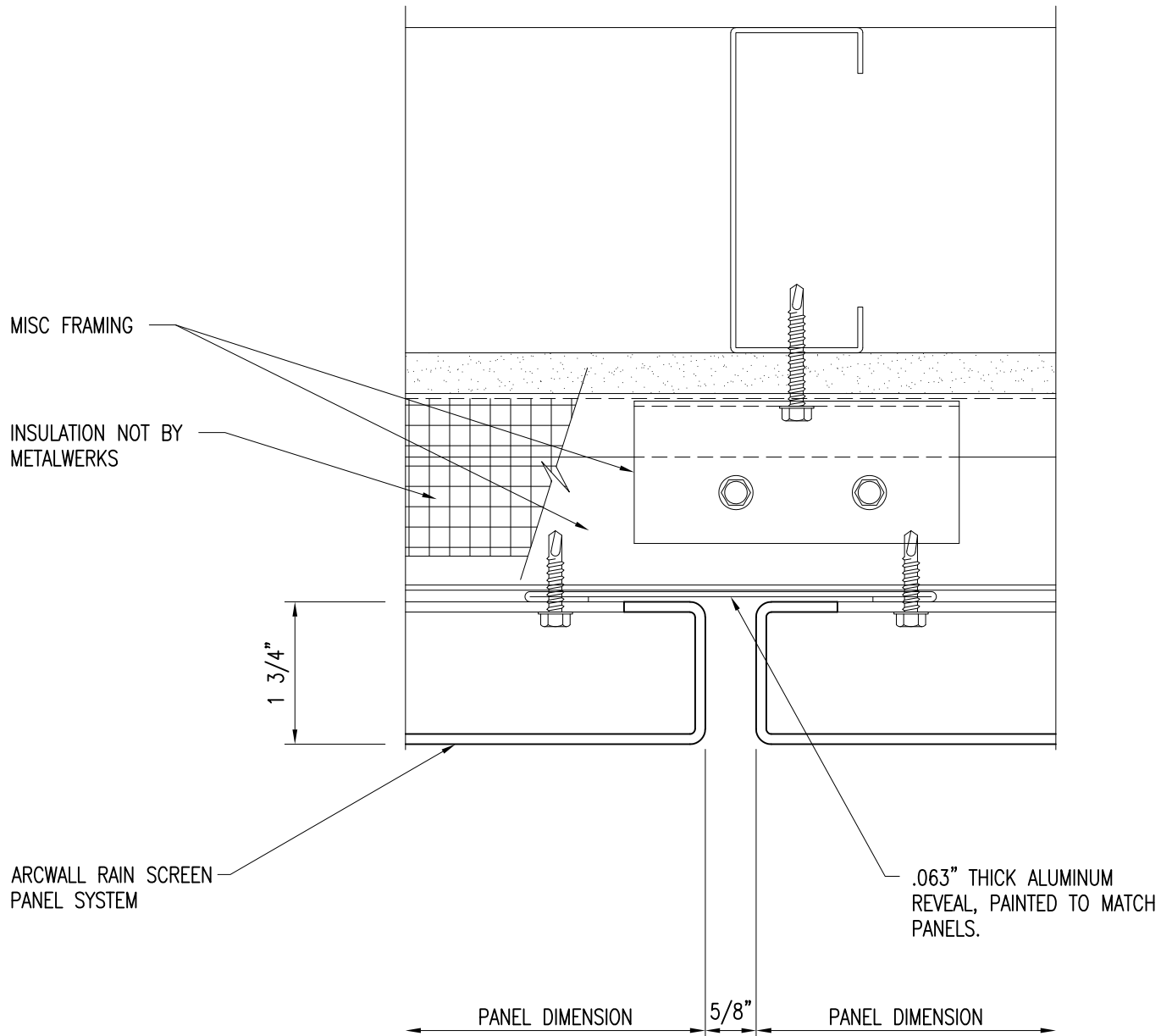
## 1) Horizontal Joint



PRIMARY WALL CONSTRUCTION AND INSULATION NOT BY METALWERKS. 16 GAUGE METAL STUDS MINIMUM REQUIRED

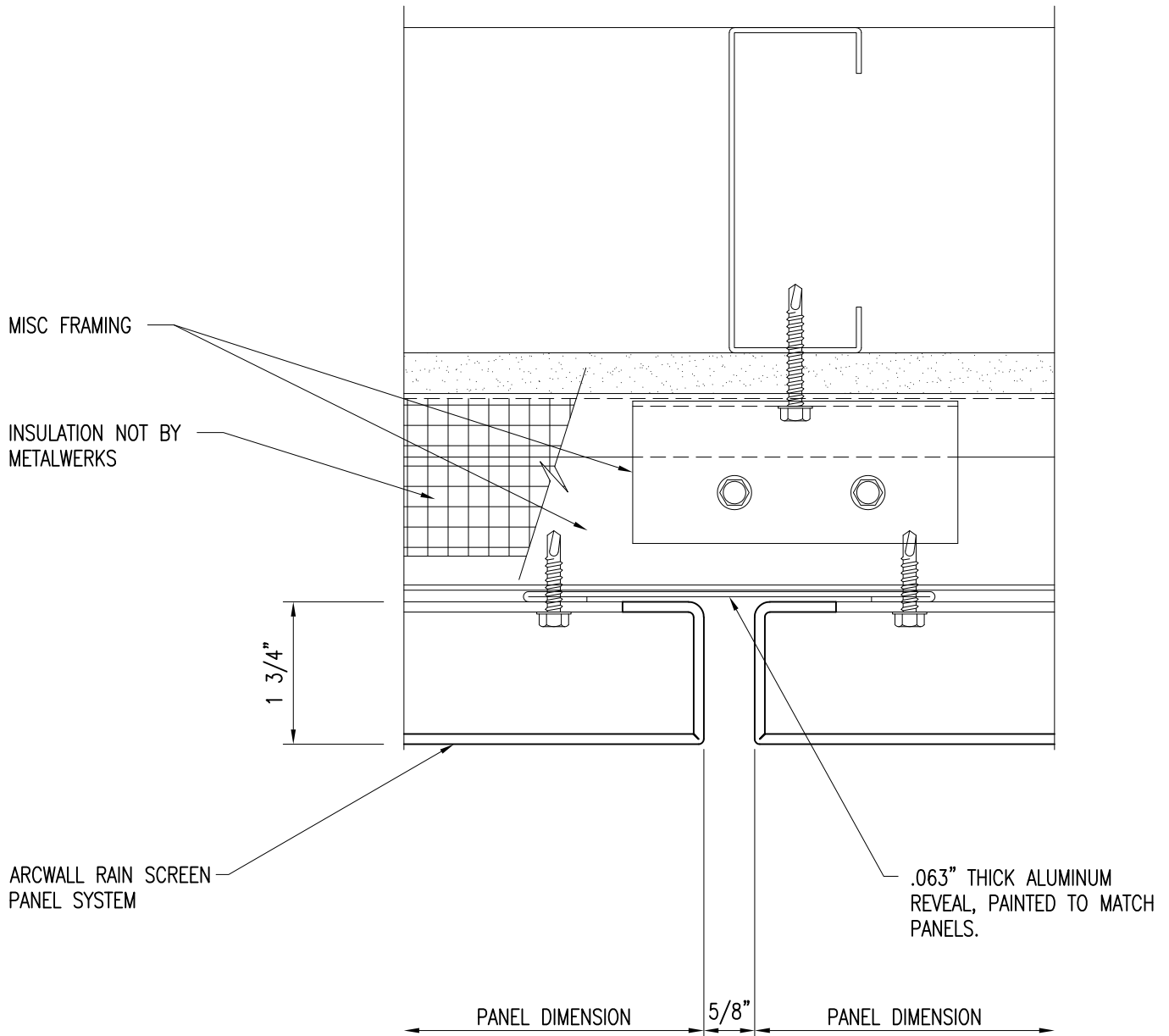
## 1a) Horizontal Joint w/ Back Routed Edges

PRIMARY WALL CONSTRUCTION AND INSULATION  
NOT BY METALWERKS. 16 GAUGE METAL STUDS  
MINIMUM REQUIRED



## 2) Vertical Joint

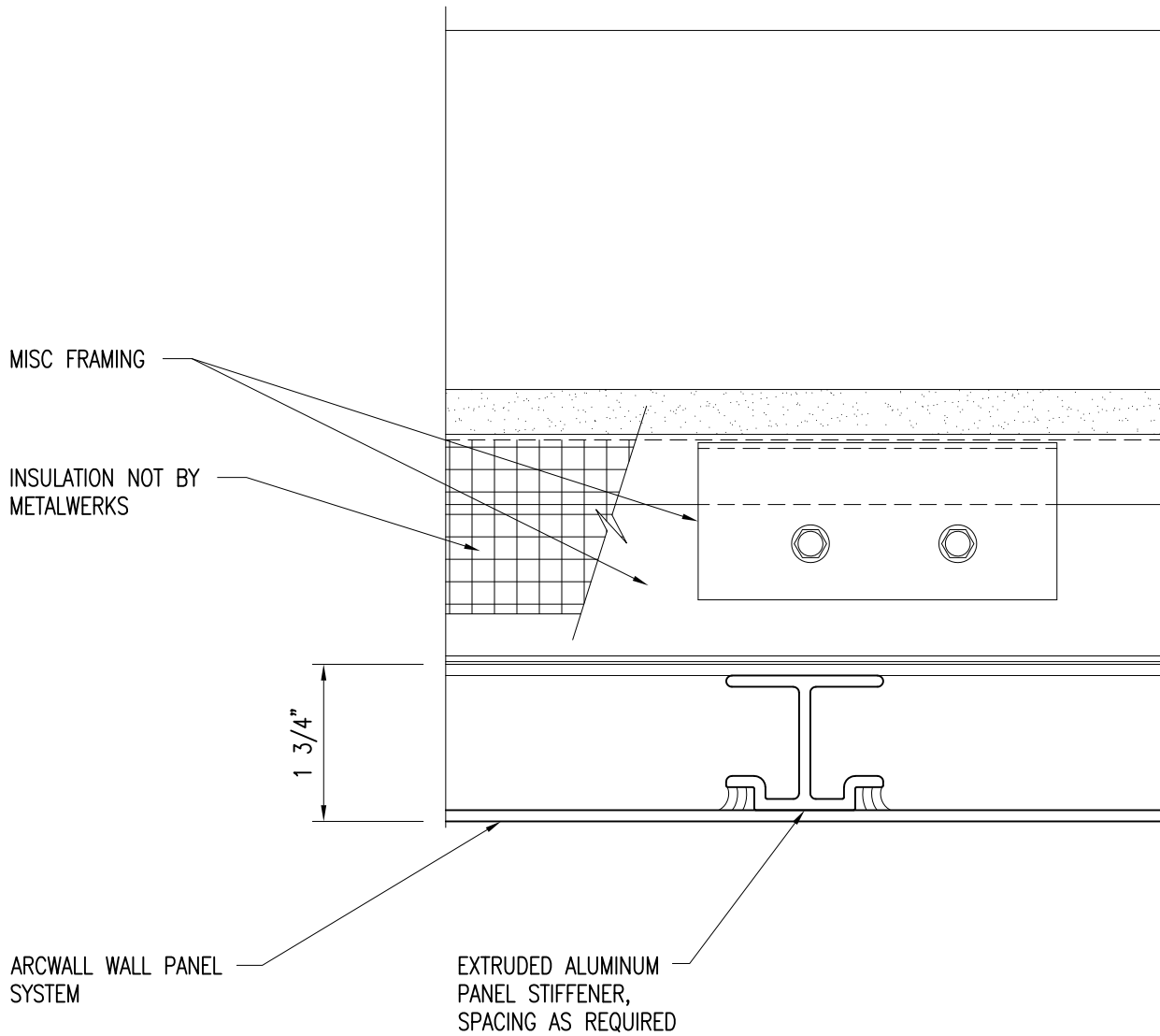
PRIMARY WALL CONSTRUCTION AND INSULATION  
NOT BY METALWERKS. 16 GAUGE METAL STUDS  
MINIMUM REQUIRED



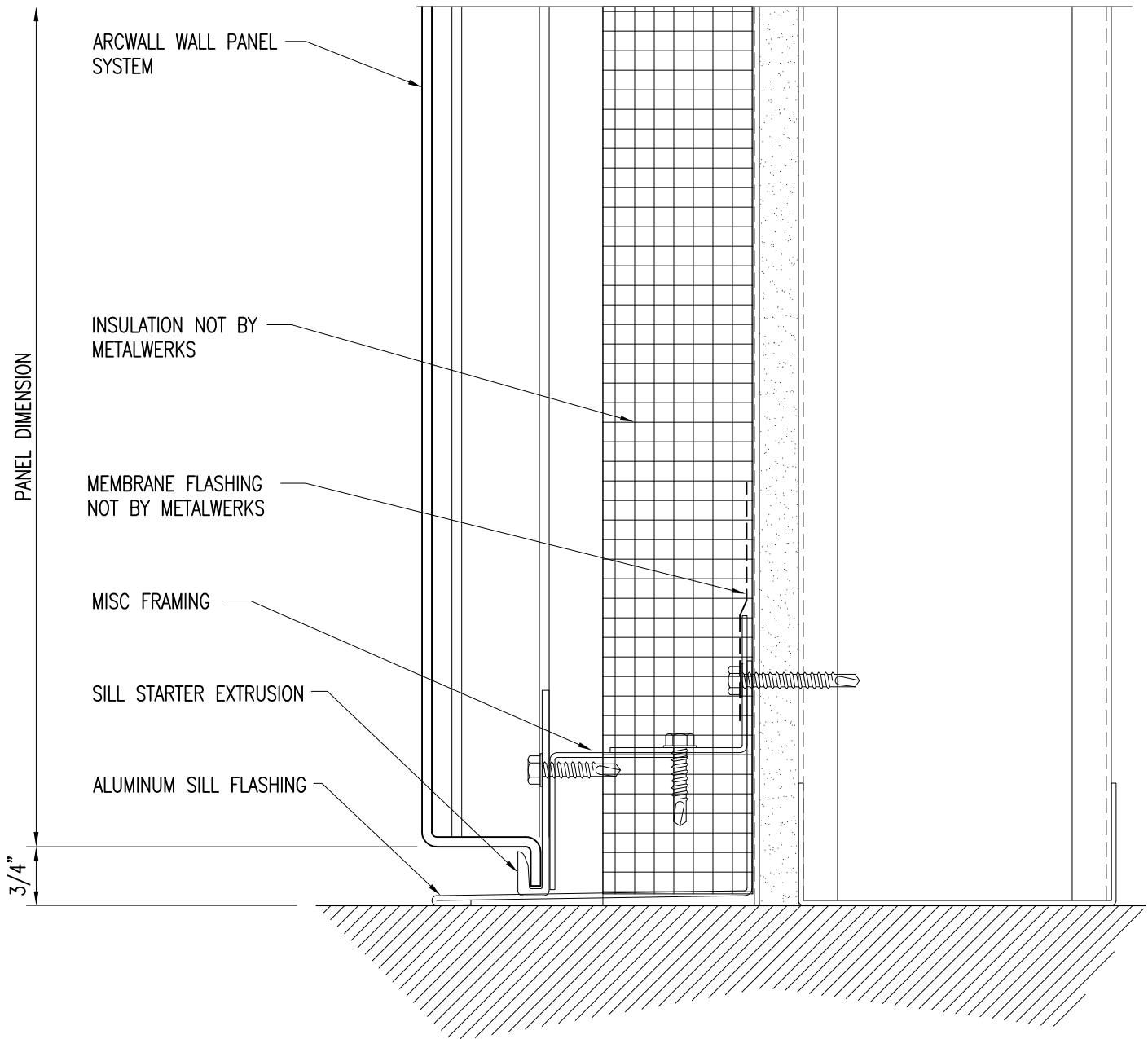
## 2a) Vertical Joint w/ Back Routed Edges



PRIMARY WALL CONSTRUCTION AND INSULATION  
NOT BY METALWERKS. 16 GAUGE METAL STUDS  
MINIMUM REQUIRED



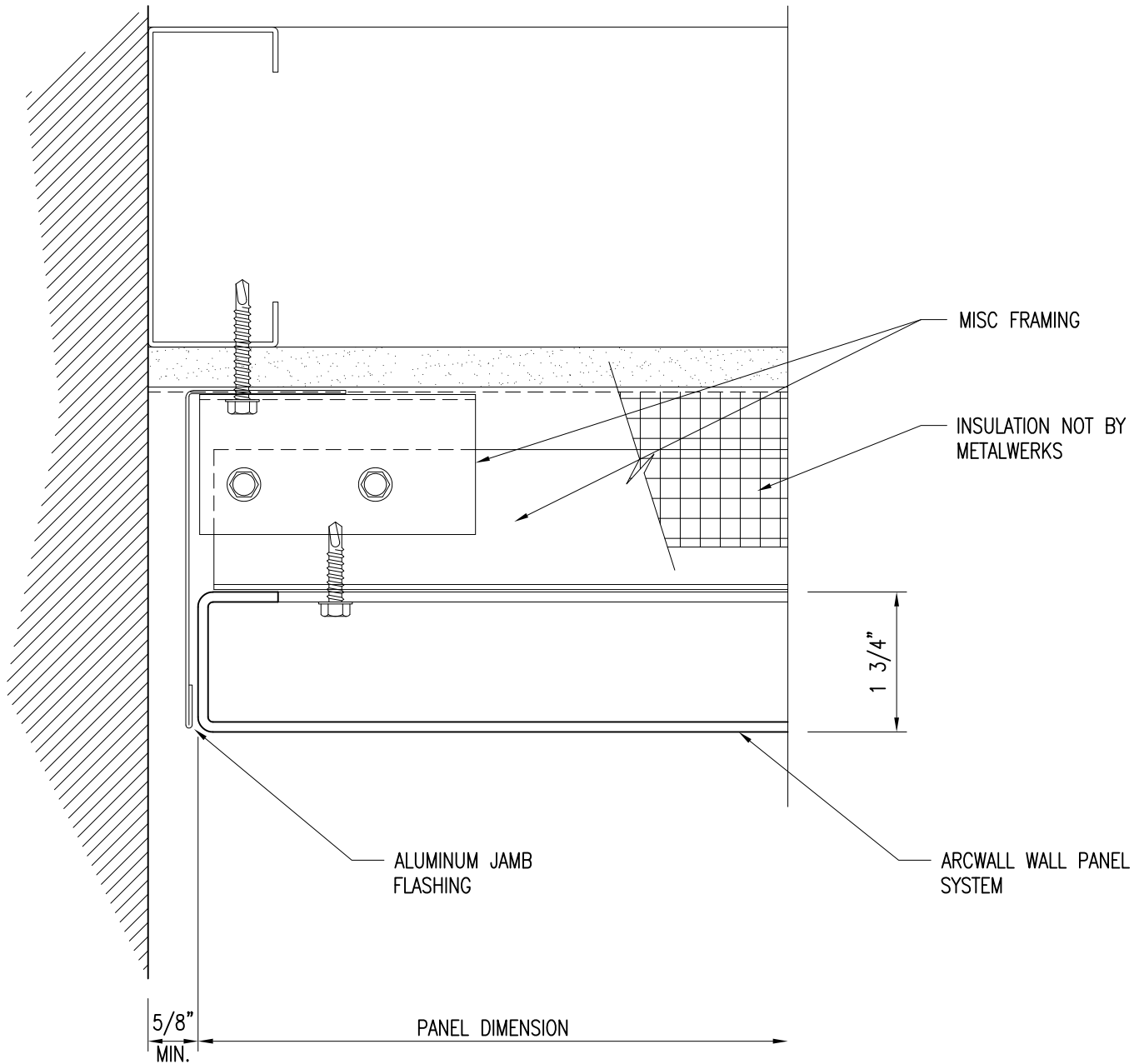
## 3) Panel Stiffener



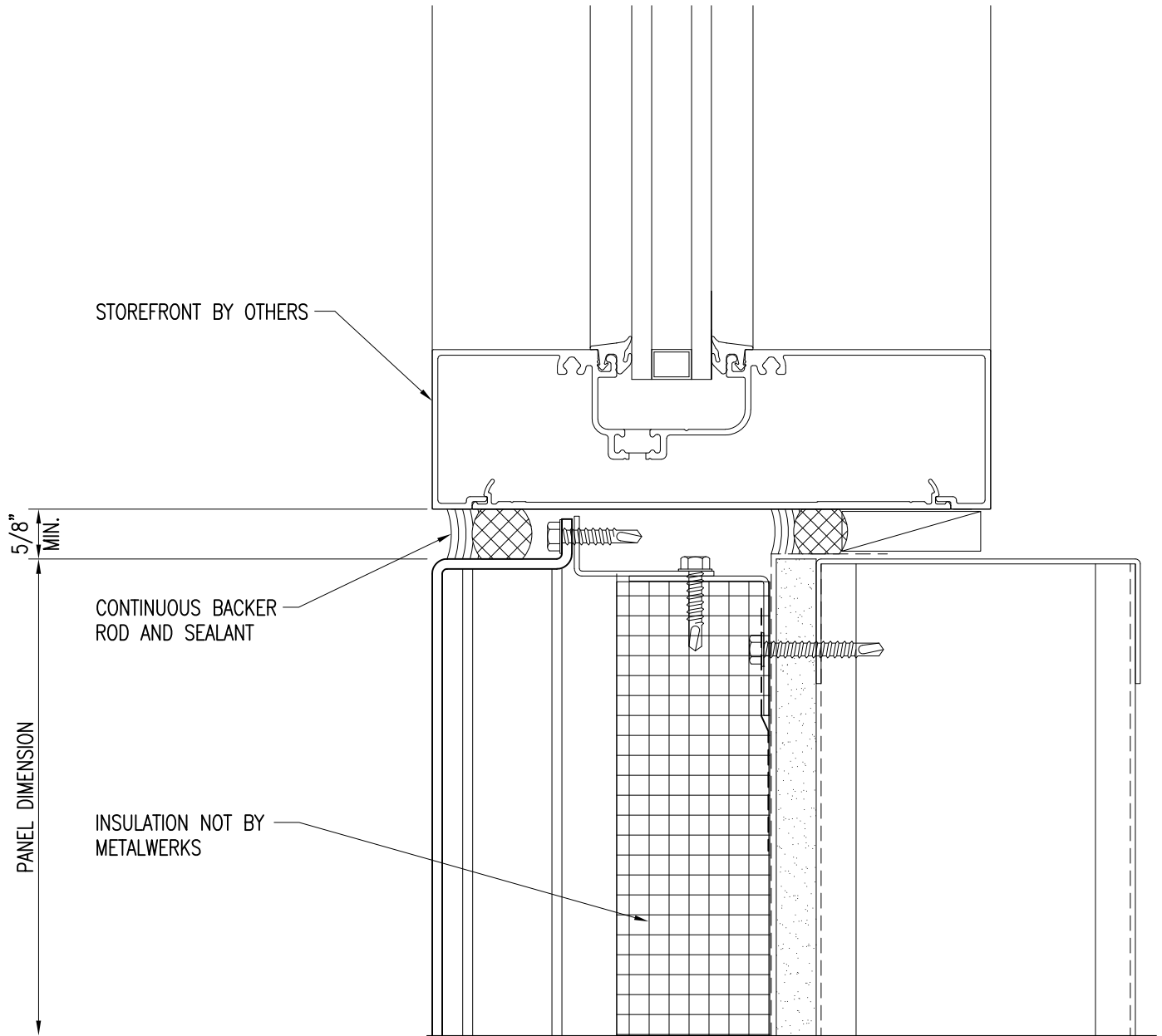
PRIMARY WALL CONSTRUCTION AND INSULATION NOT BY METALWERKS. 16 GAUGE METAL STUDS MINIMUM REQUIRED

## 4) Panel Sill

PRIMARY WALL CONSTRUCTION AND INSULATION  
NOT BY METALWERKS. 16 GAUGE METAL STUDS  
MINIMUM REQUIRED

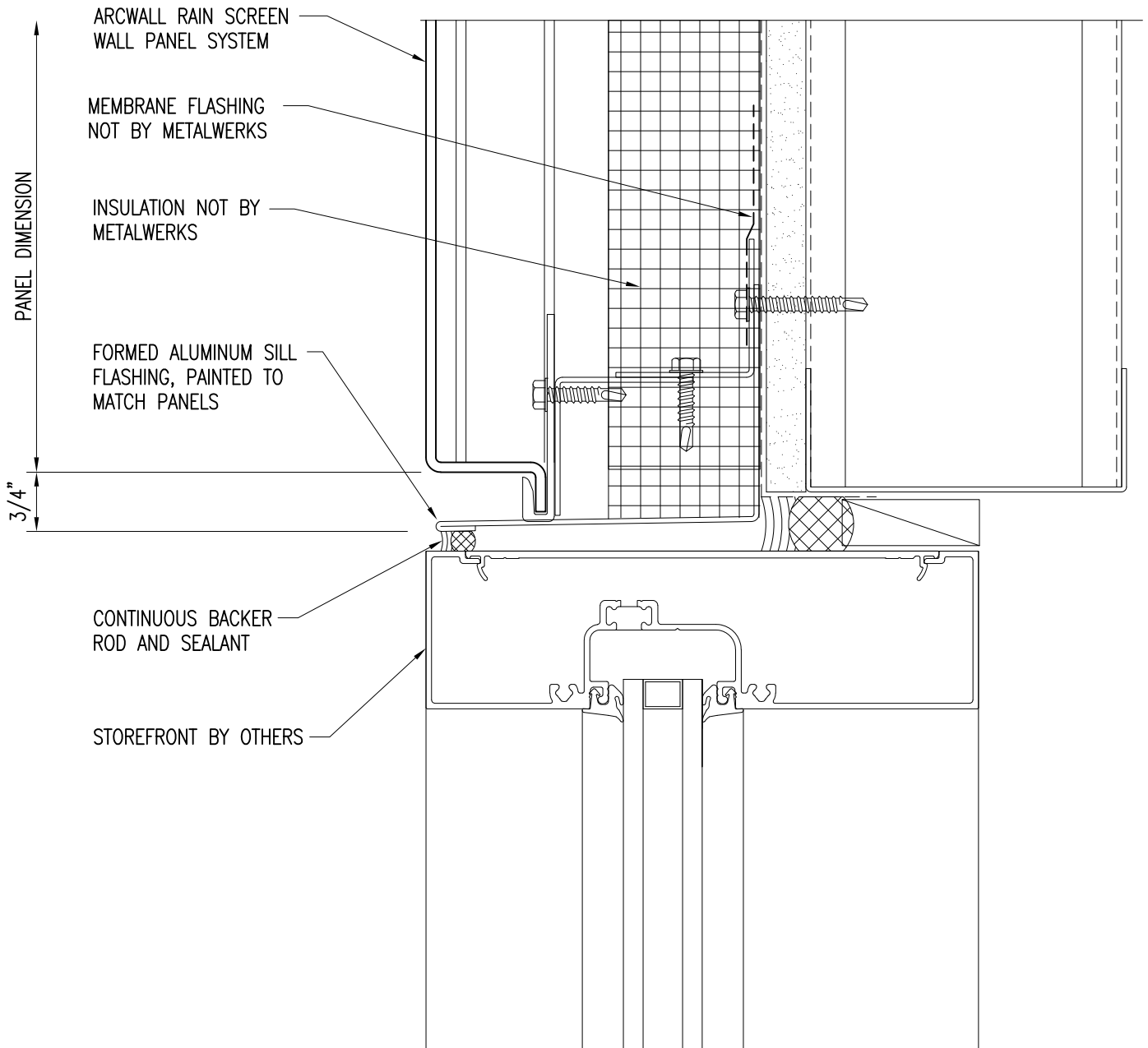


## 5) Panel Jamb



PRIMARY WALL CONSTRUCTION AND INSULATION NOT BY METALWERKS. 16 GAUGE METAL STUDS MINIMUM REQUIRED

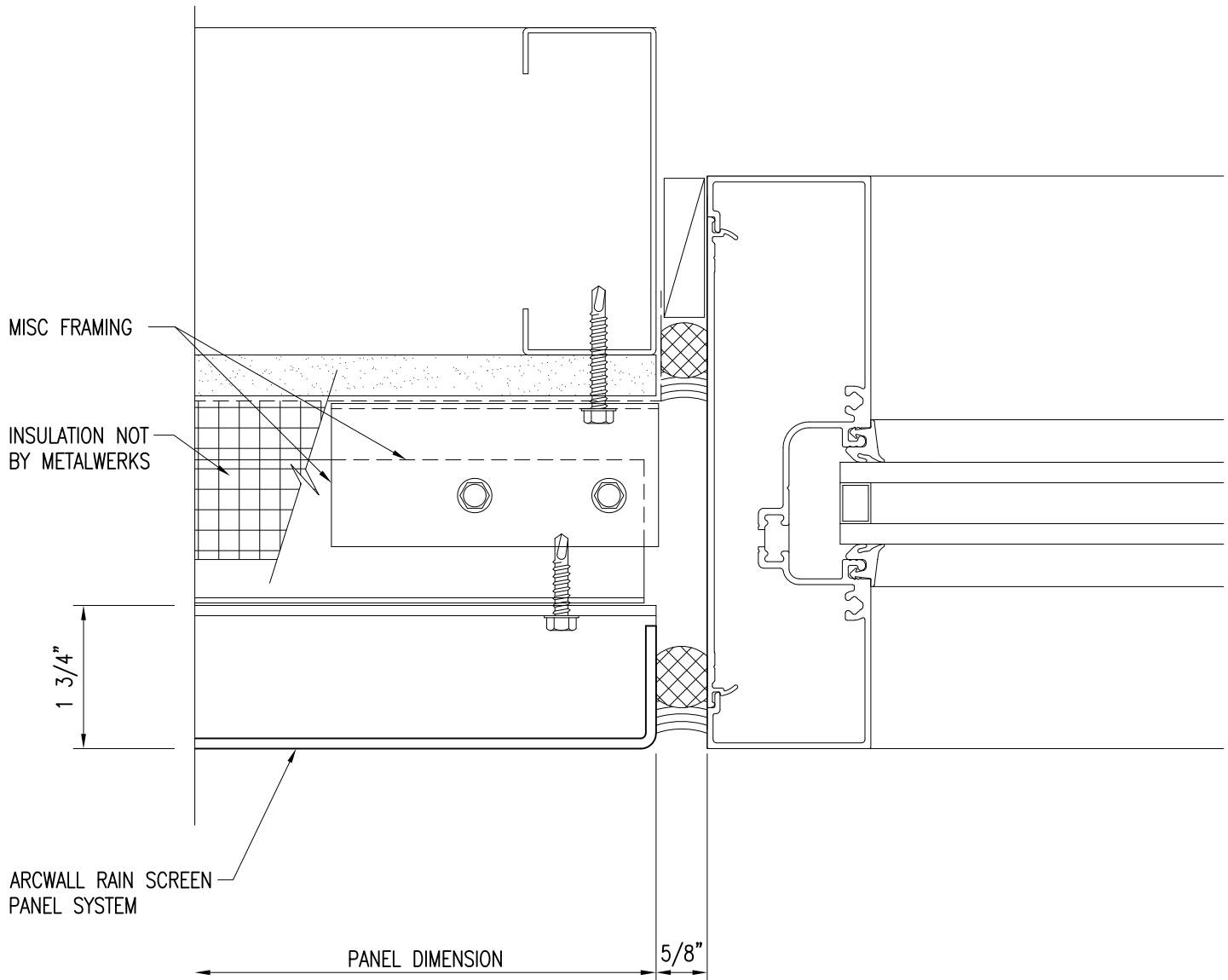
## 6) Storefront Sill



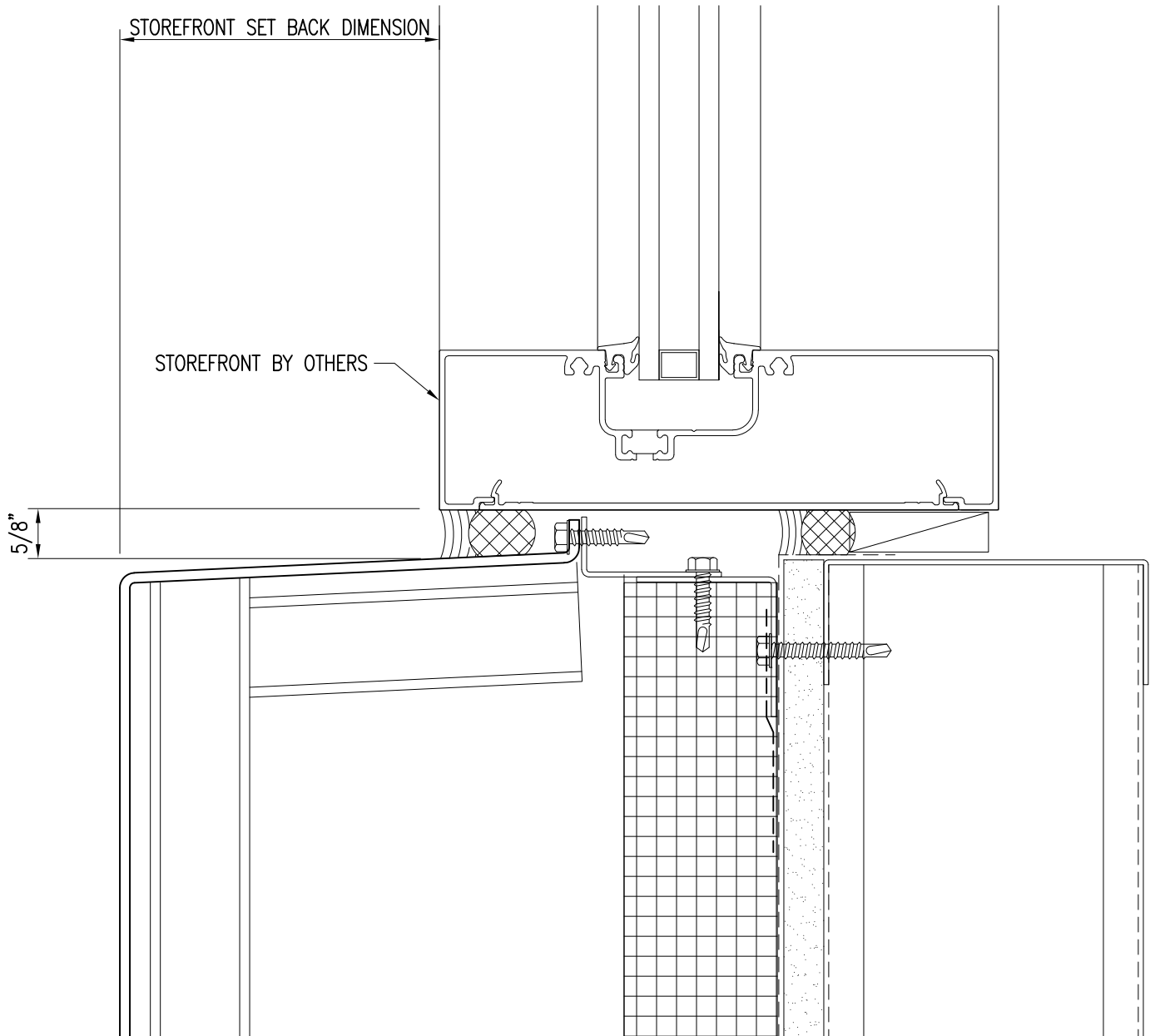
PRIMARY WALL CONSTRUCTION AND INSULATION NOT BY METALWERKS. 16 GAUGE METAL STUDS MINIMUM REQUIRED

## 7) Storefront Head

PRIMARY WALL CONSTRUCTION AND INSULATION  
NOT BY METALWERKS. 16 GAUGE METAL STUDS  
MINIMUM REQUIRED

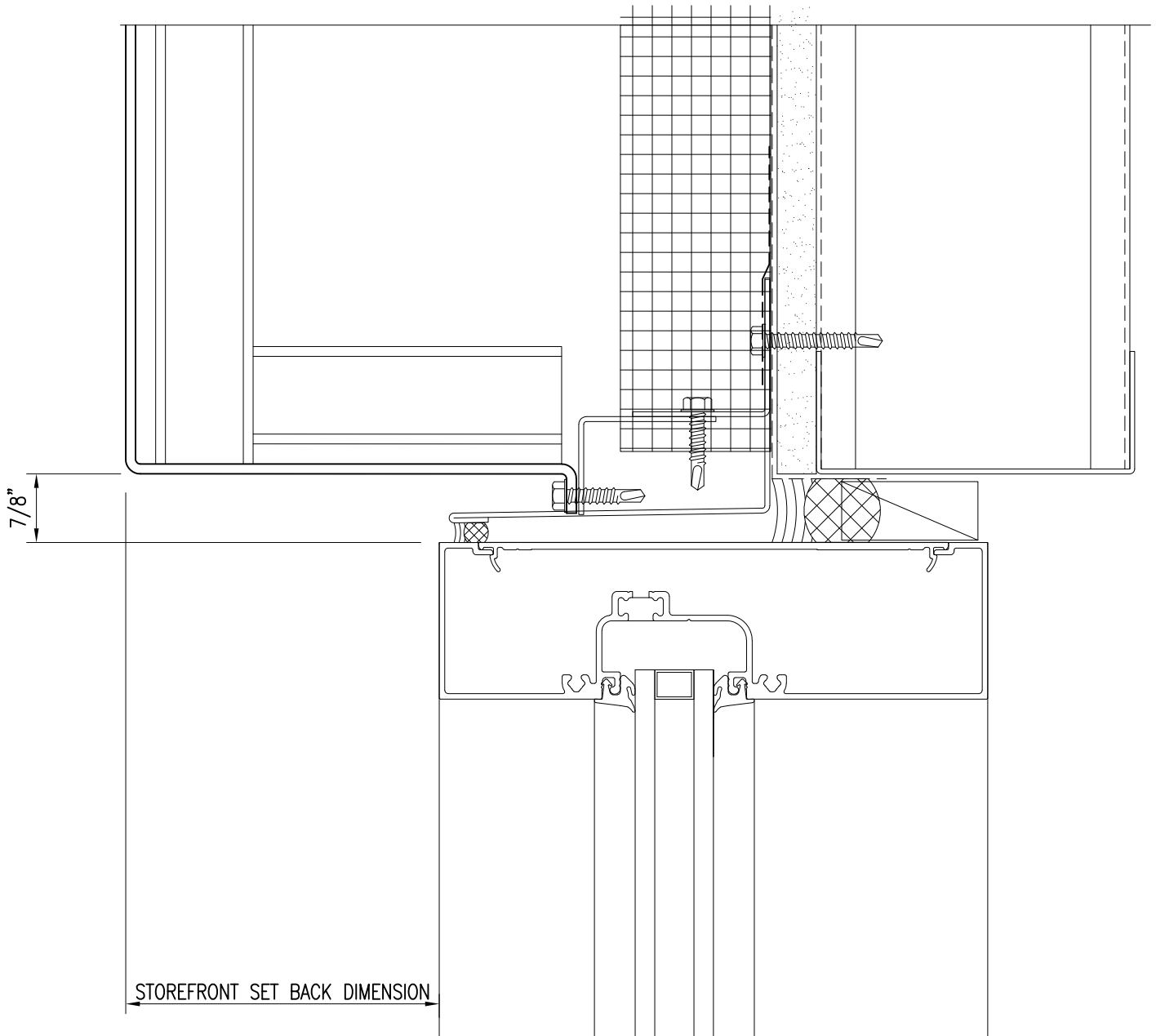


## 8) Storefront Jamb



PRIMARY WALL CONSTRUCTION AND INSULATION  
NOT BY METALWERKS. 16 GAUGE METAL STUDS  
MINIMUM REQUIRED

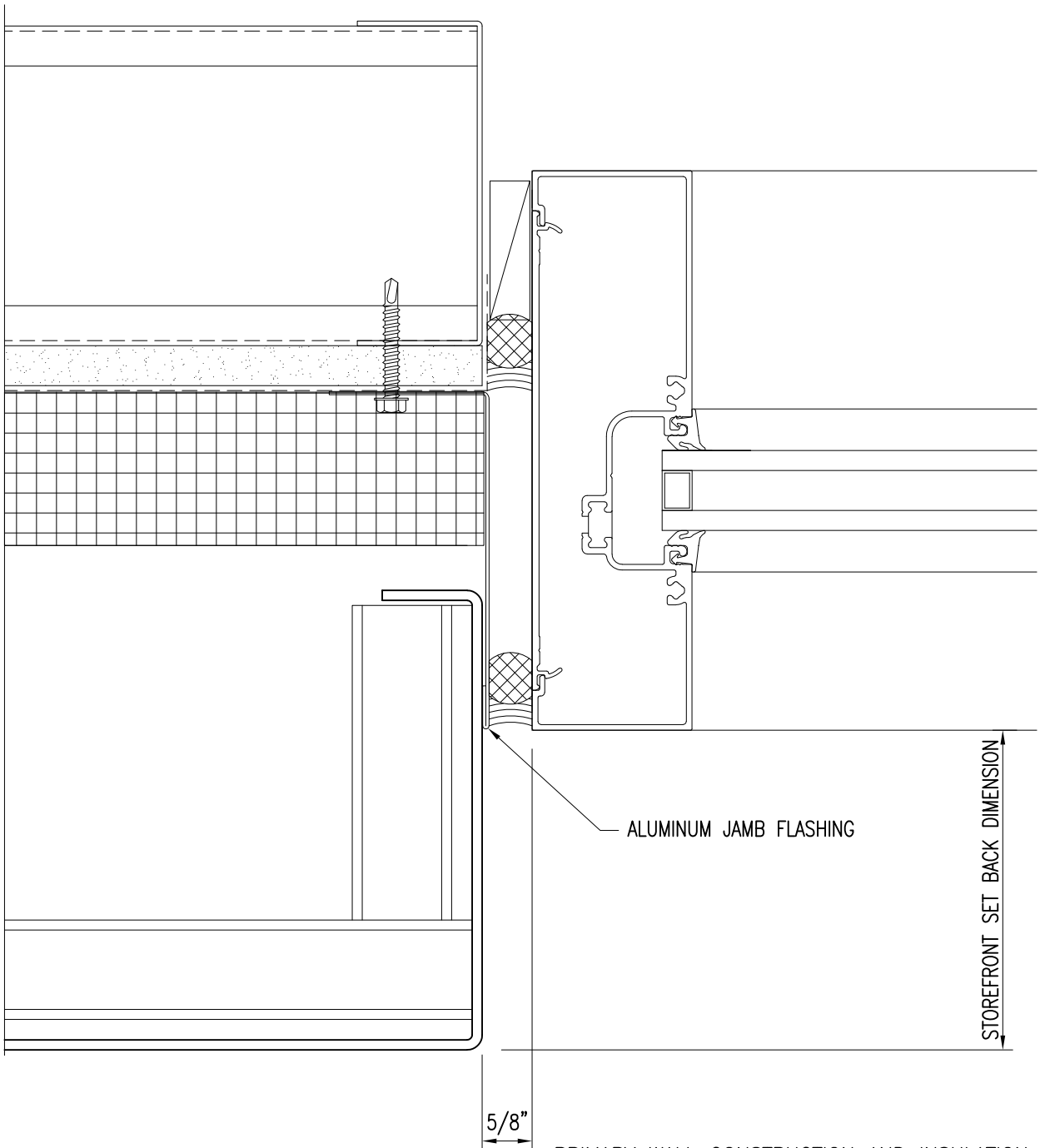
## 9) Recessed Storefront Sill



PRIMARY WALL CONSTRUCTION AND INSULATION  
NOT BY METALWERKS. 16 GAUGE METAL STUDS  
MINIMUM REQUIRED

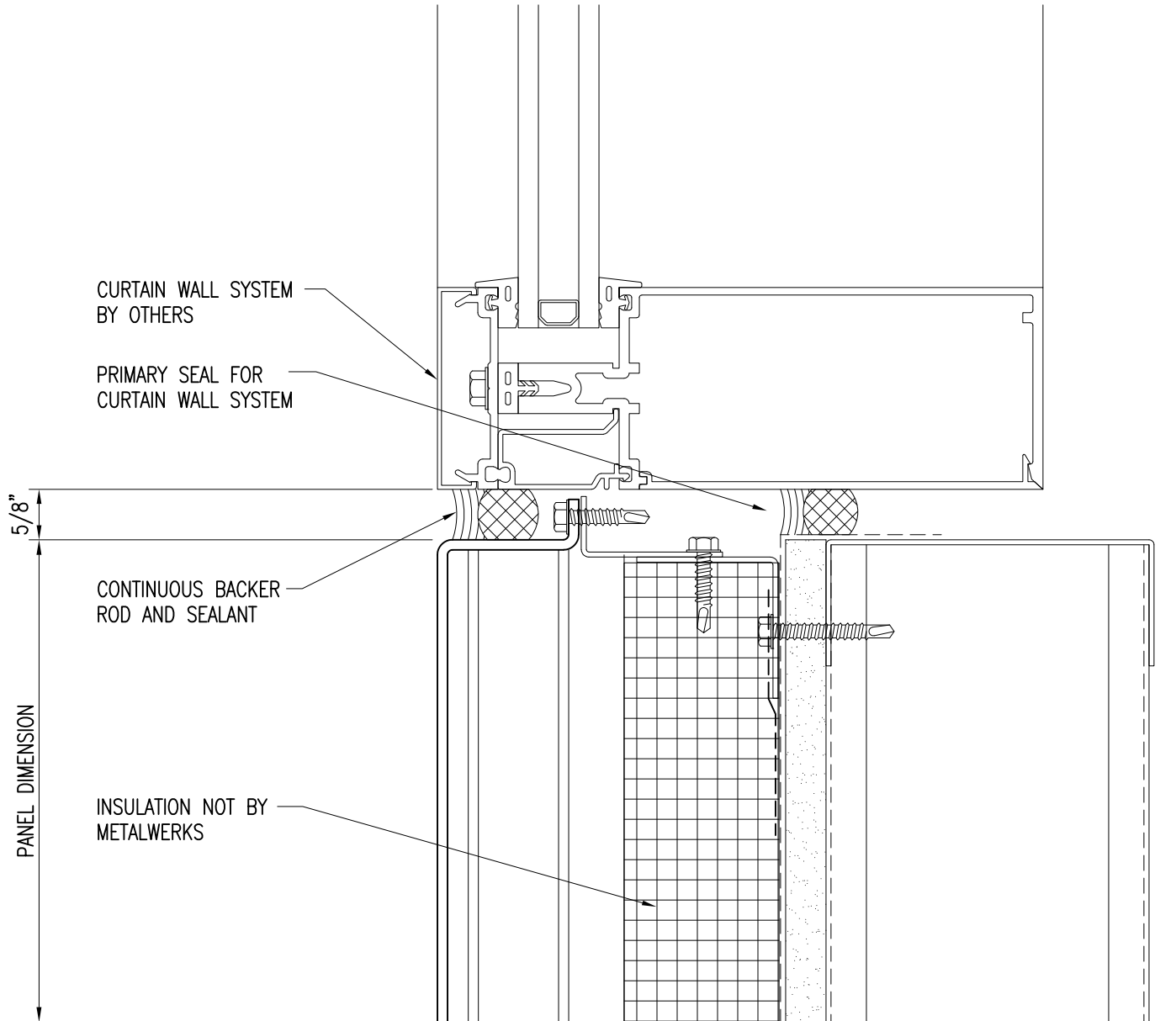
## 10) Recessed Storefront Head





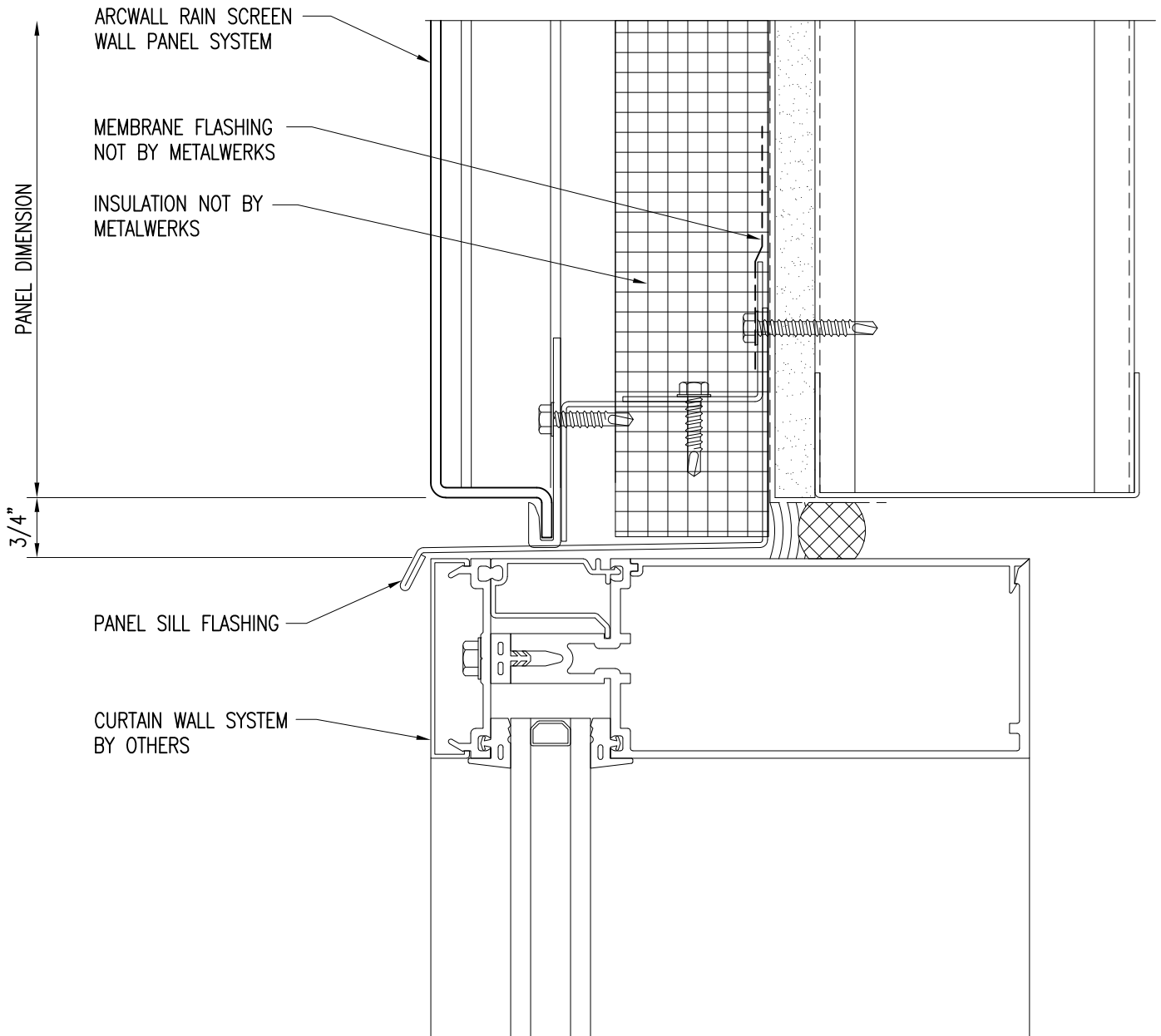
PRIMARY WALL CONSTRUCTION AND INSULATION NOT BY METALWERKS. 16 GAUGE METAL STUDS MINIMUM REQUIRED

## 11) Recessed Storefront Jamb



PRIMARY WALL CONSTRUCTION AND INSULATION NOT BY METALWERKS. 16 GAUGE METAL STUDS MINIMUM REQUIRED

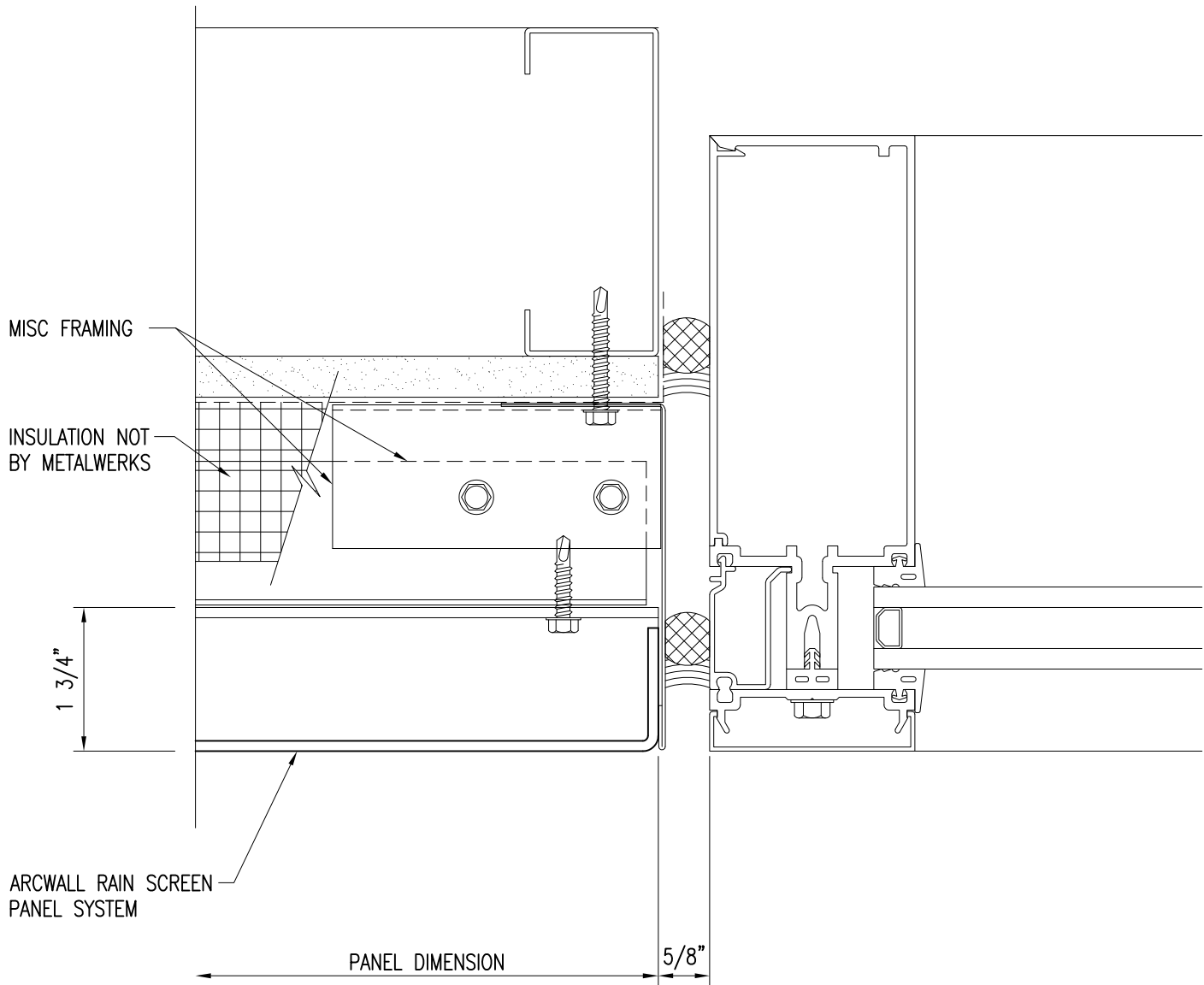
## 12) Curtain Wall Sill



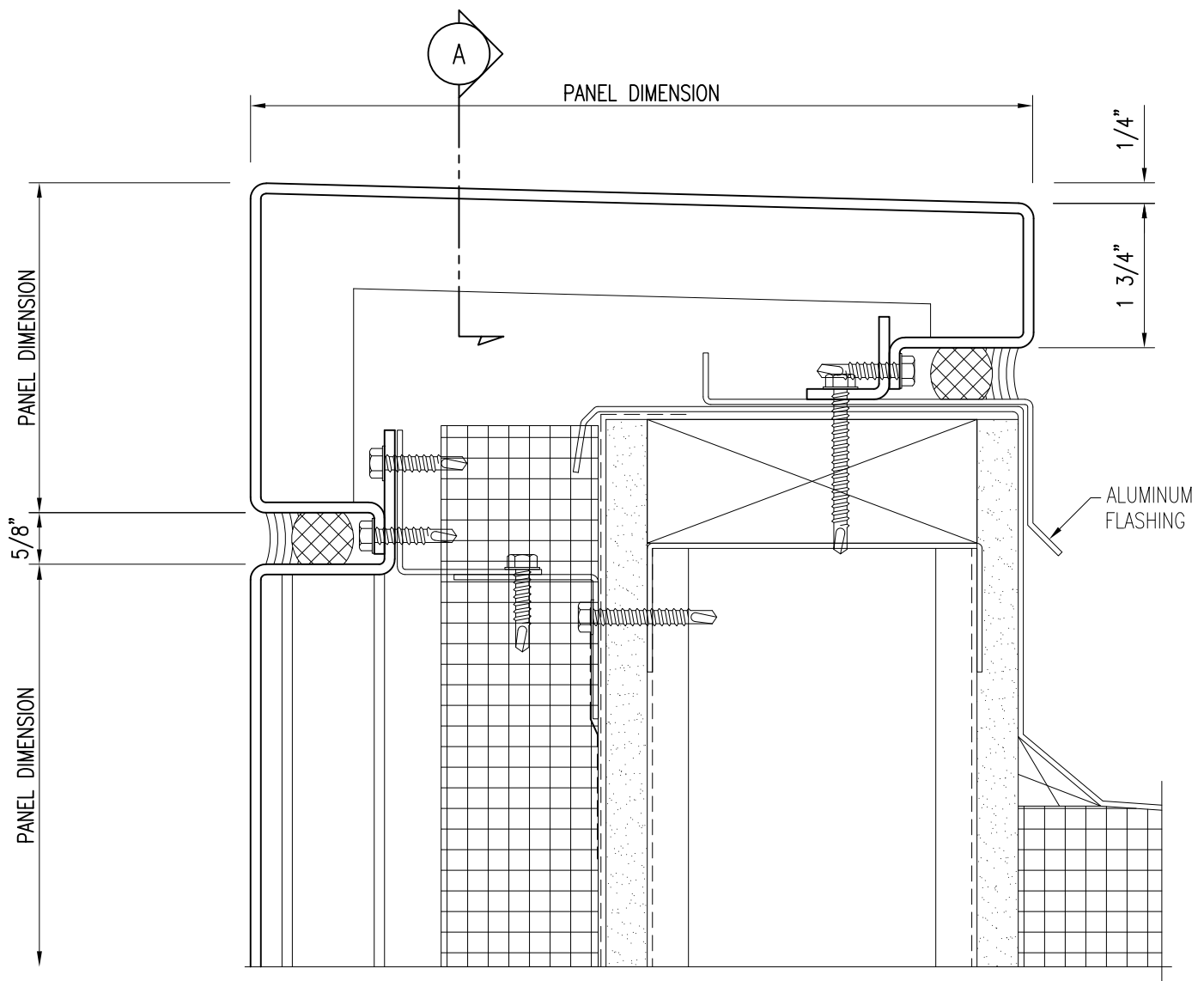
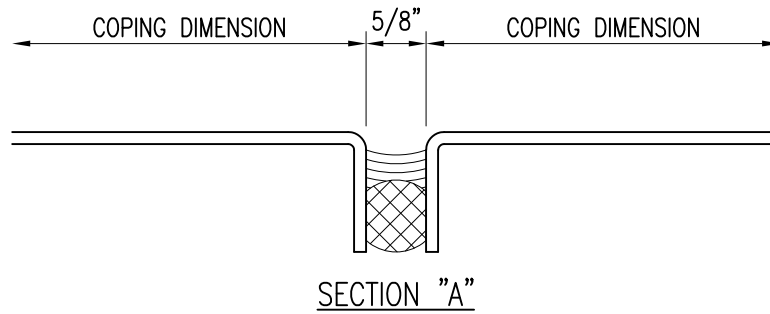
PRIMARY WALL CONSTRUCTION AND INSULATION NOT BY METALWERKS. 16 GAUGE METAL STUDS MINIMUM REQUIRED

## 13) Curtain Wall Sill

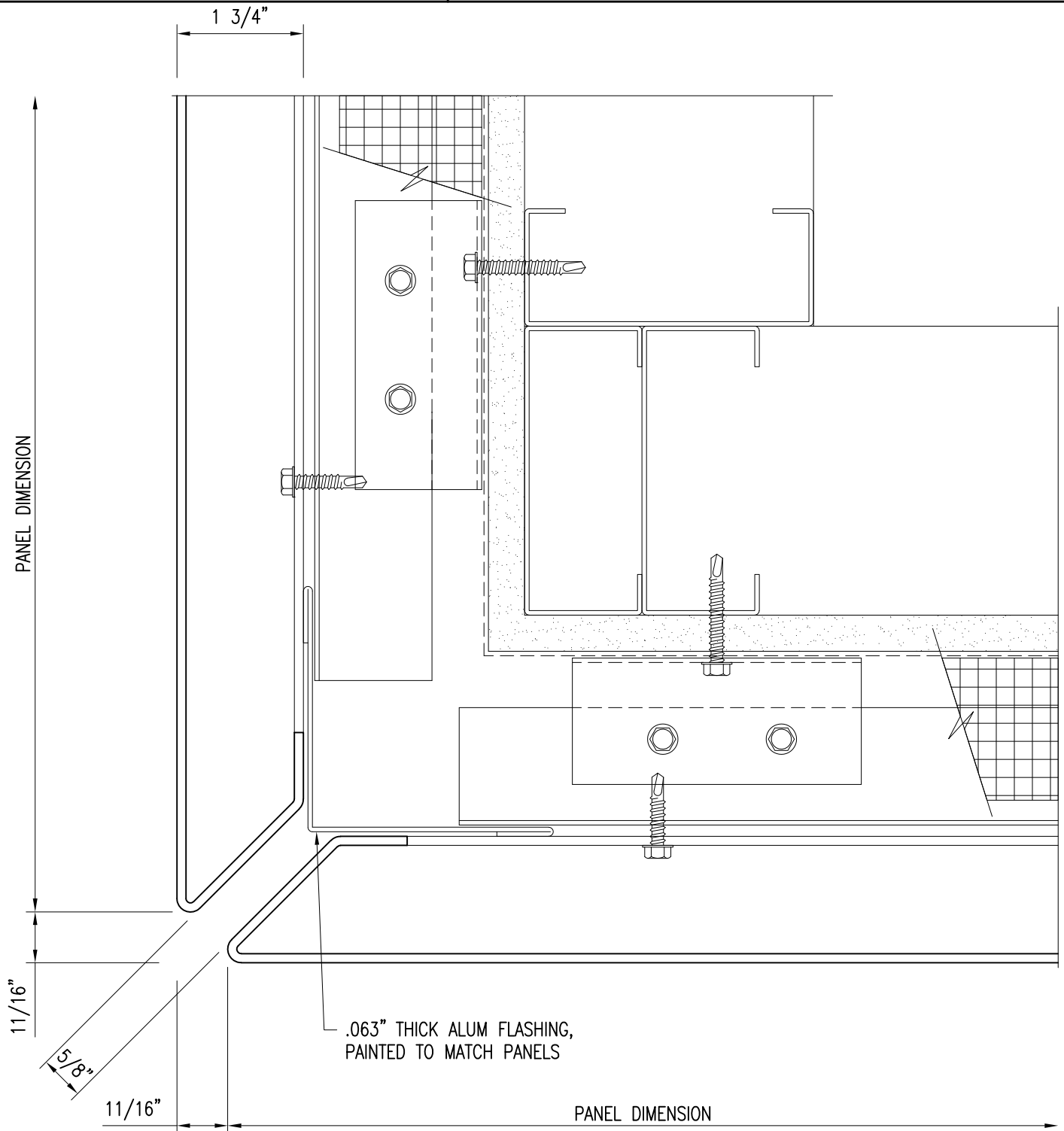
PRIMARY WALL CONSTRUCTION AND INSULATION  
NOT BY METALWERKS. 16 GAUGE METAL STUDS  
MINIMUM REQUIRED



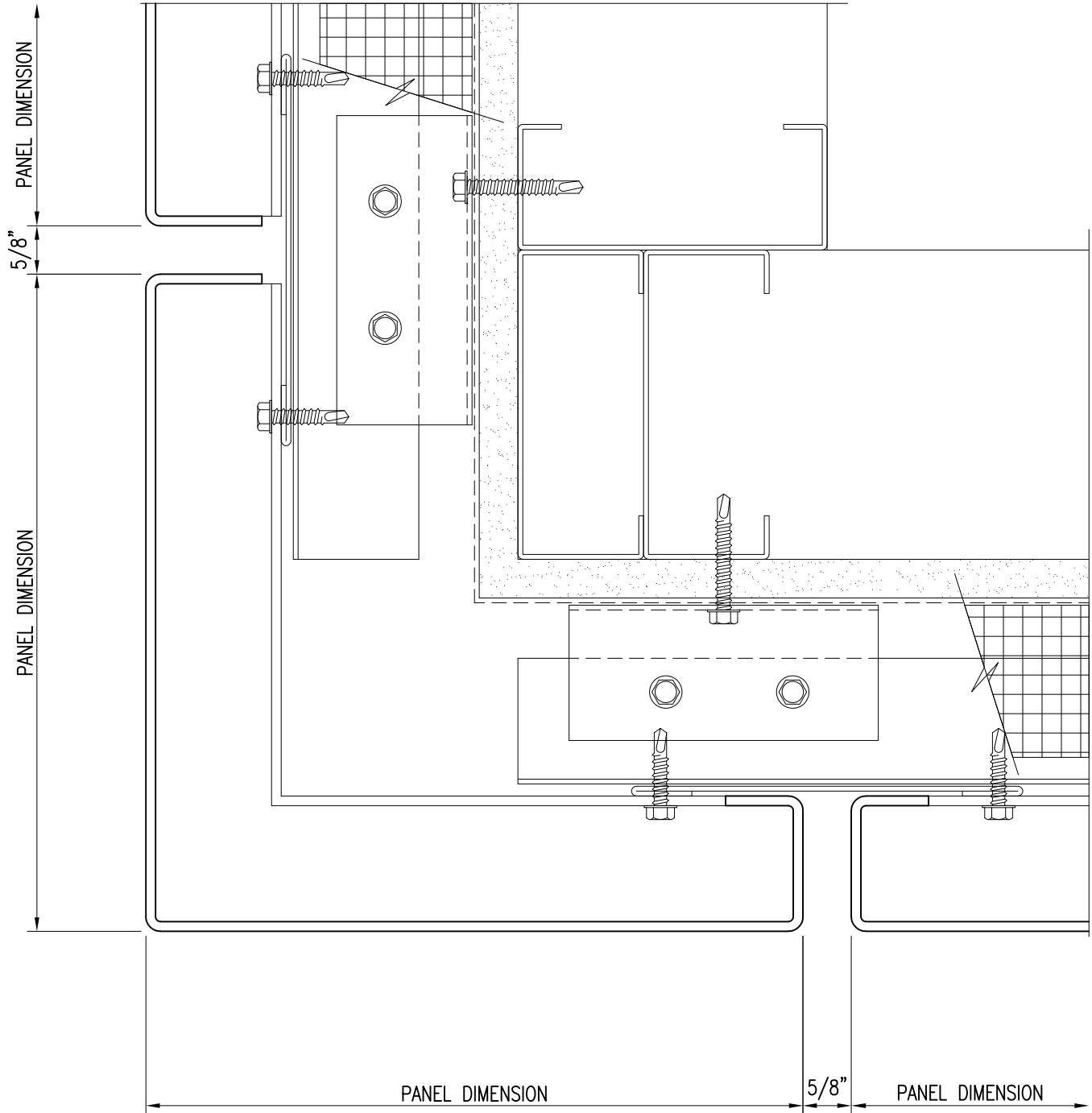
## 14) Curtain Wall Jamb



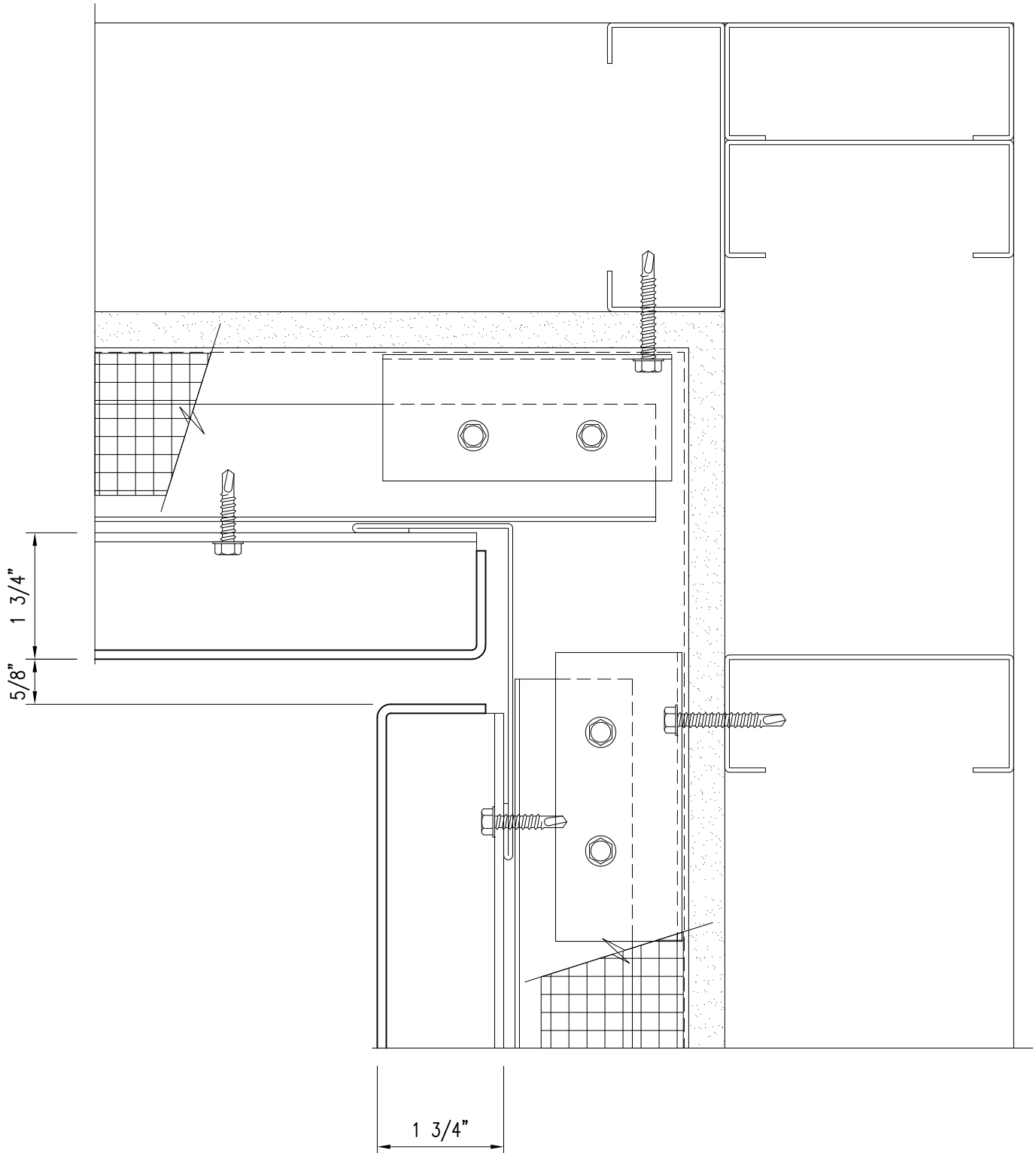
## 15) Coping



## 16) Standard Exterior Detail

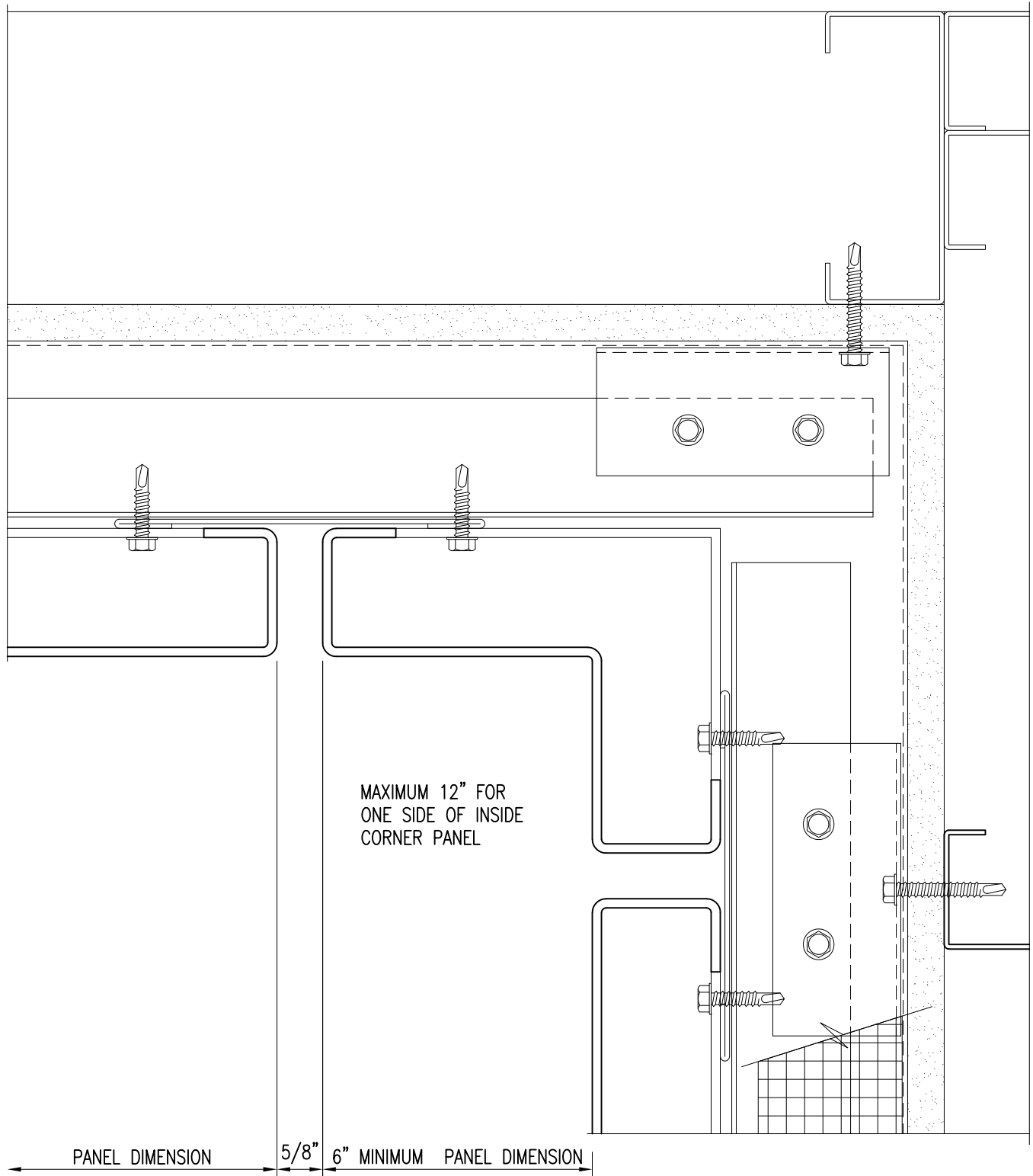


## 17) Exterior Detail w/ Optional Mitered Panel



## 18) Standard Inside Corner





## 19) Inside Corner w/ Optional Mitered Panel