

TOWNSON
TOWN CENTER

**ARCHITECTURAL
METAL SCREENWALLS
& GRILLE ASSEMBLIES**



Metalwërks®



NORDE ROM

ARCHITECTURAL METAL SCREENWALLS & GRILLE ASSEMBLIES

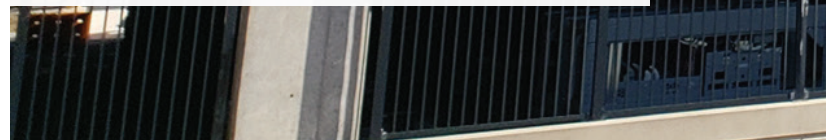
Metalwërks® Screenwalls and Grille Assemblies are manufactured from a wide variety of materials, including formed or extruded metal profiles, perforated metal panels, woven architectural mesh, and bar grilles. These systems are engineered to ensure structural integrity from the outside face of the cladding element to the primary building structure.

Metalwërks selects assembled components from only the highest- quality architectural commodity producers. These can be designed for pre-assembly at our facility or knocked down (“K/D”) if site logistics permit.



FEATURES

- Unitized or knocked down depending on project logistics or installation preference
- Long life solid metal assemblies for ultimate durability, with damage-resistant finishes
- Non-Combustible: minimal smoke or fuel contribution
- All panel systems are reinforced/stiffened to resist deflection limits
- Dismountable or operable as desired
- 100% recyclable and manufactured from materials with high post-consumer/industrial content which can contribute to LEED credits
- Exposed structural elements manufactured from non-ferrous aluminum or stainless steel that will not rust (unlike galvanized steel or AESS-coated steel)
- Virtually limitless palette of colors, finishes, and textures to complement, enhance or contrast Concrete Facades
- Aluminum: “Long life” high performance finishes are post applied for the highest quality of coverage and uniformity
- Available in no-VOC powder coated finishes
- Finish warranties up to 20 years (coated aluminum) – Consult Metalwërks for limitations





USES & BENEFITS

Provide shading, heat reduction, and ventilation for parking garages, glass curtain walls, or glazed assemblies

Conceal mechanical equipment on rooftops or plaza-level enclosures

Serve as backdrop for branding, murals, signage, or banners

Add texture to an exterior face and/or create dramatic surfaces for unique building designs

Enhance privacy for occupants and/or neighboring properties

Visually complement or contrast with Metalwërks plate wall system

Break up the scale of large structures

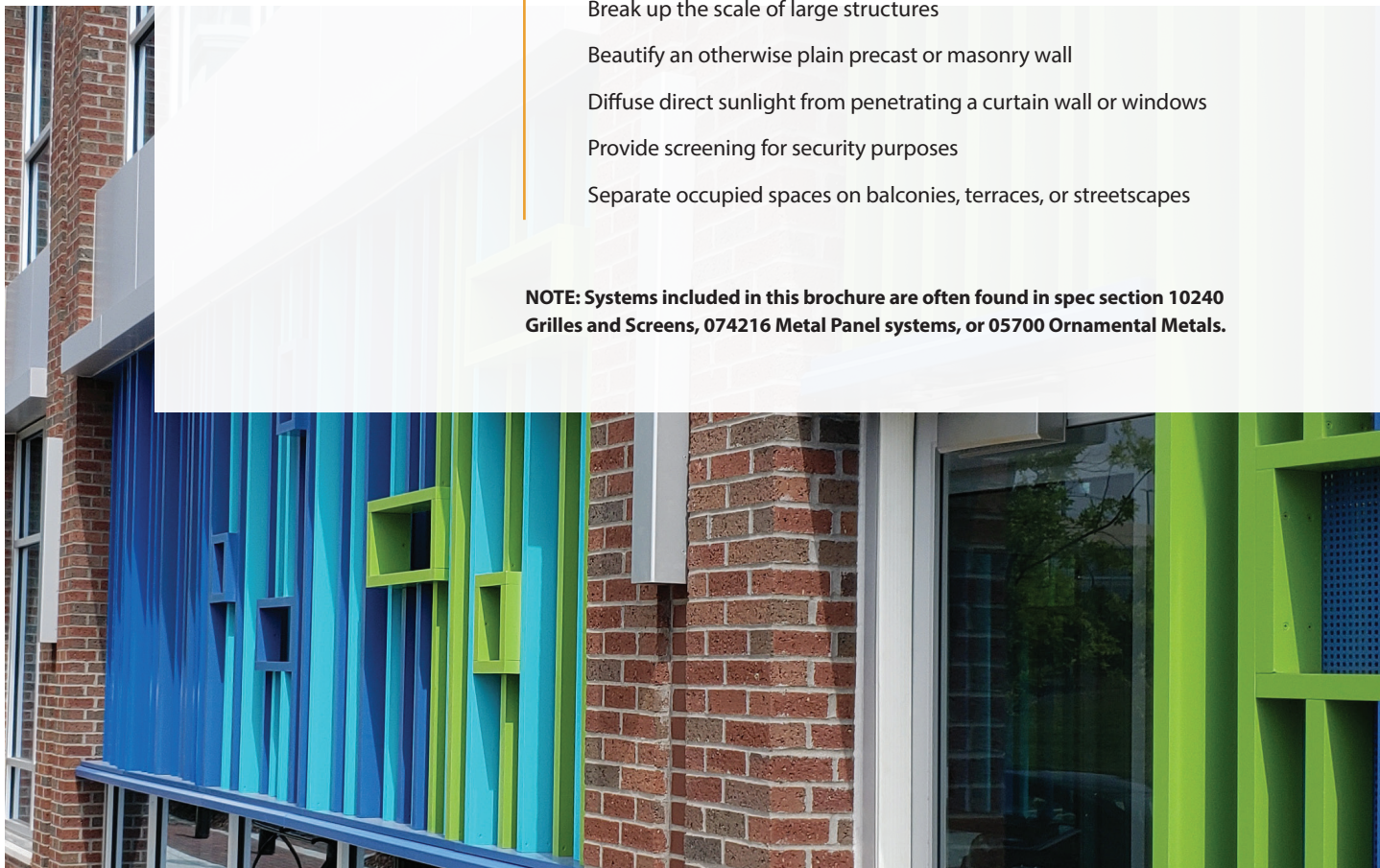
Beautify an otherwise plain precast or masonry wall

Diffuse direct sunlight from penetrating a curtain wall or windows


Provide screening for security purposes

Separate occupied spaces on balconies, terraces, or streetscapes

NOTE: Systems included in this brochure are often found in spec section 10240 Grilles and Screens, 074216 Metal Panel systems, or 05700 Ornamental Metals.



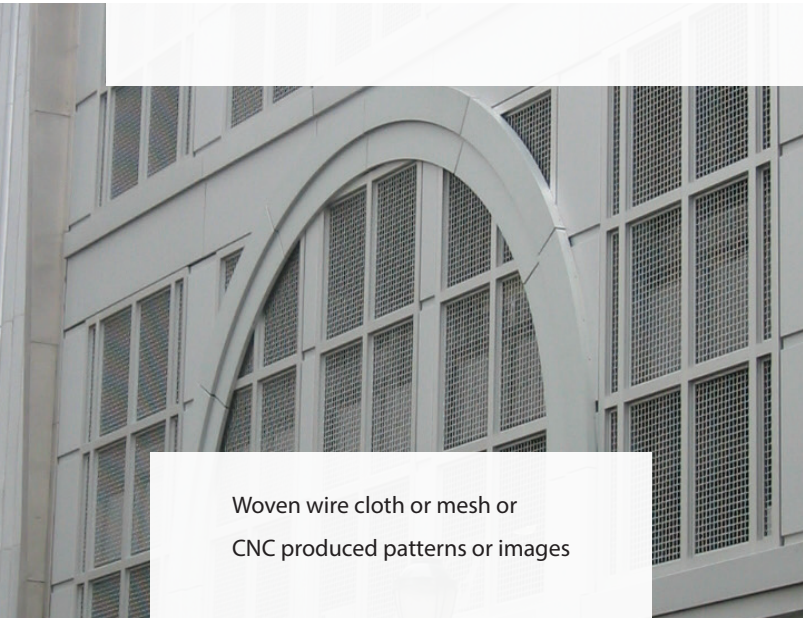
FRAMING OPTIONS




Flat perforated metal panels with repetitive or variable patterns and with complementary or contrasting framing elements

EXPOSED FRAMED ASSEMBLIES

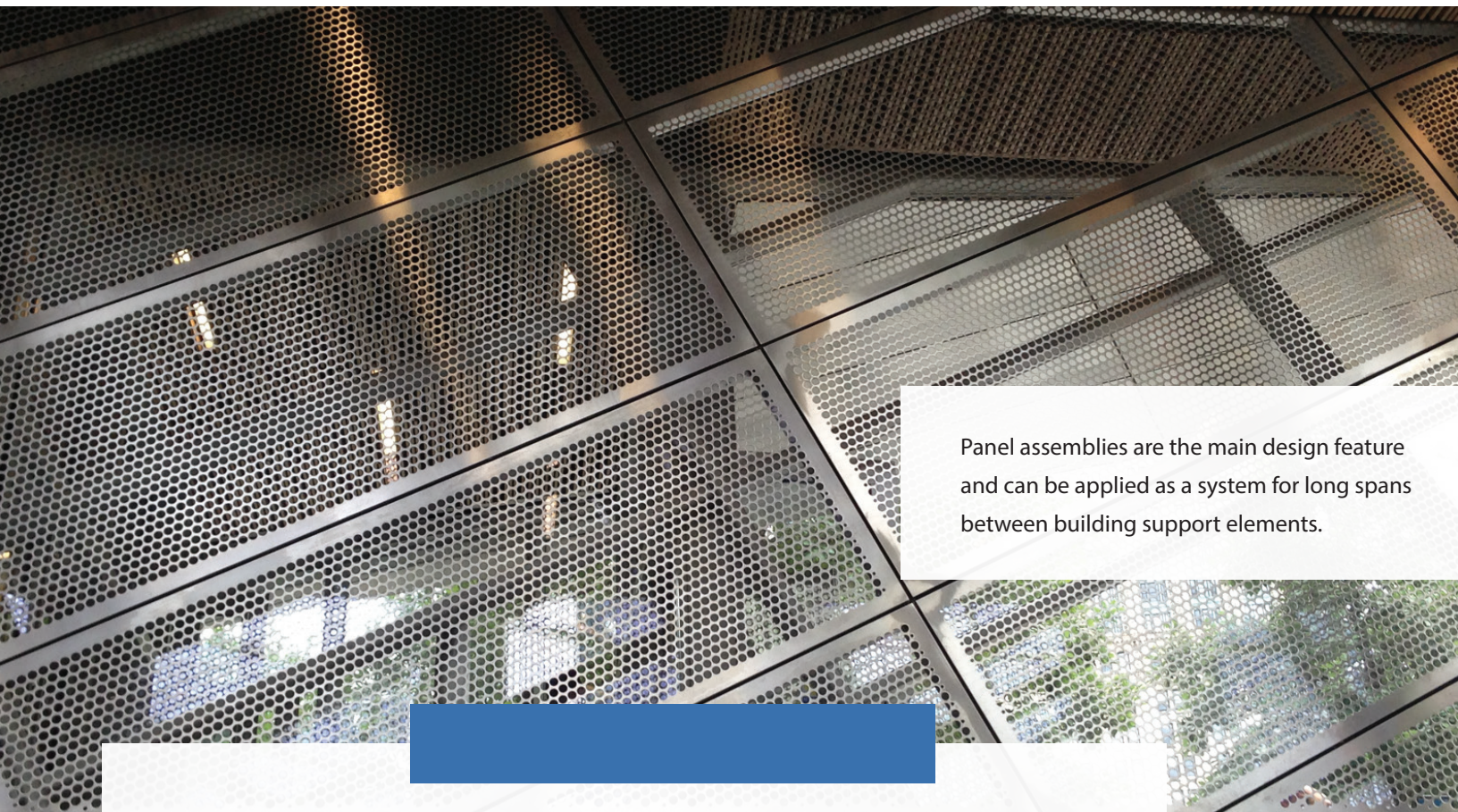
With a frame designed to span from floor to floor and featuring an infill of architectural metals, this assembly replicates the appearance of a framed window or louver.



Woven wire cloth or mesh or
CNC produced patterns or images



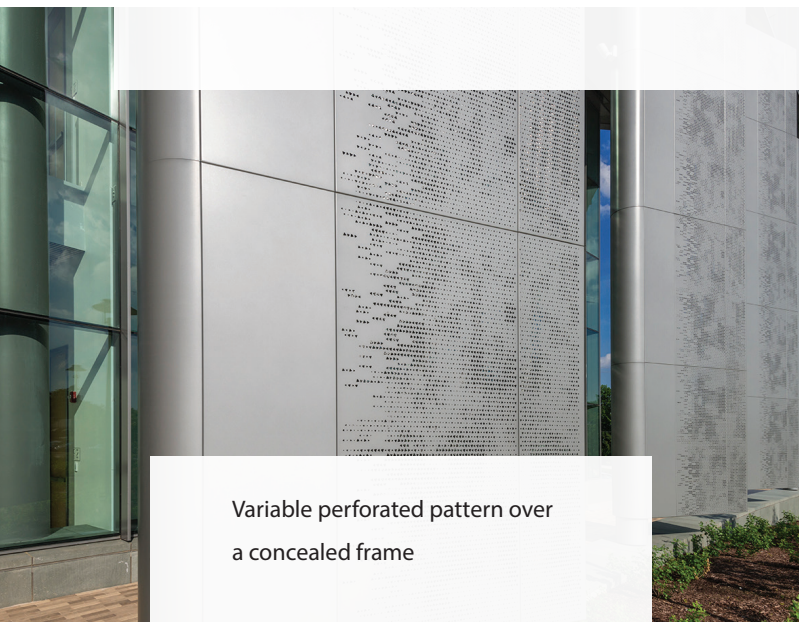
Extruded tubes, bars, or a variety of
formed shapes – much like a louver,
but with more aesthetic appeal



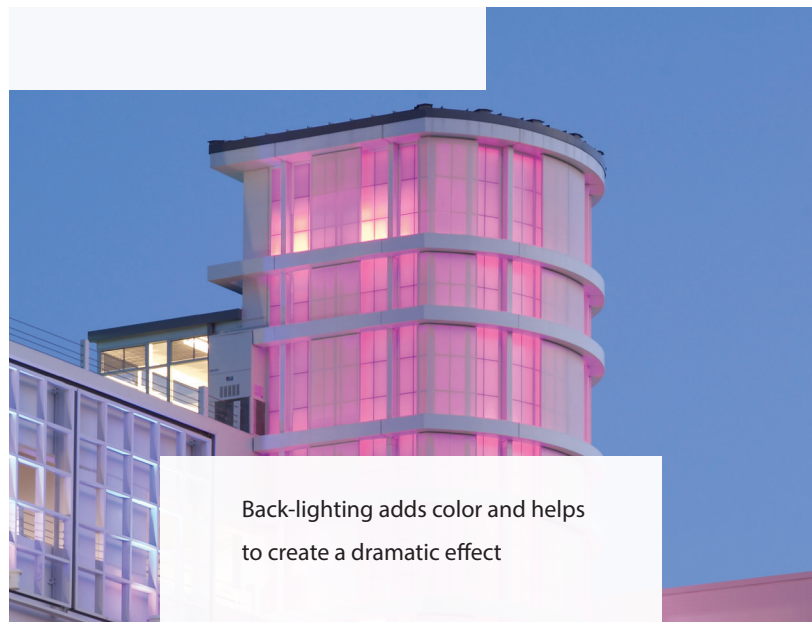
Panel assemblies are the main design feature and can be applied as a system for long spans between building support elements.

CONCEALED FRAMED ASSEMBLIES

With the facing materials covering the frame to create a floating effect, the frame assembly is recessed behind the infill materials and the joints between units are usually minimized.



Variable perforated pattern over a concealed frame



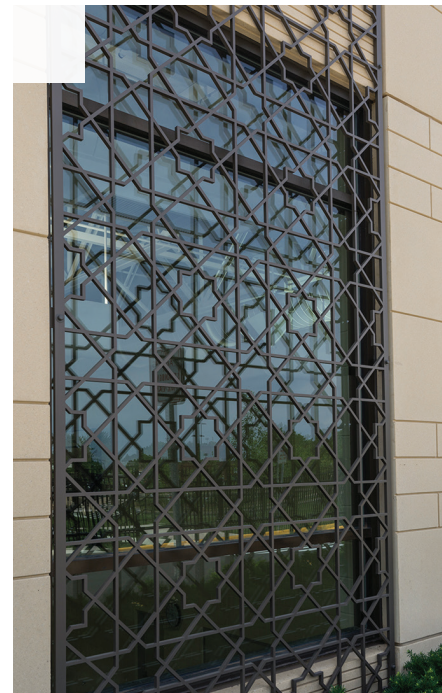
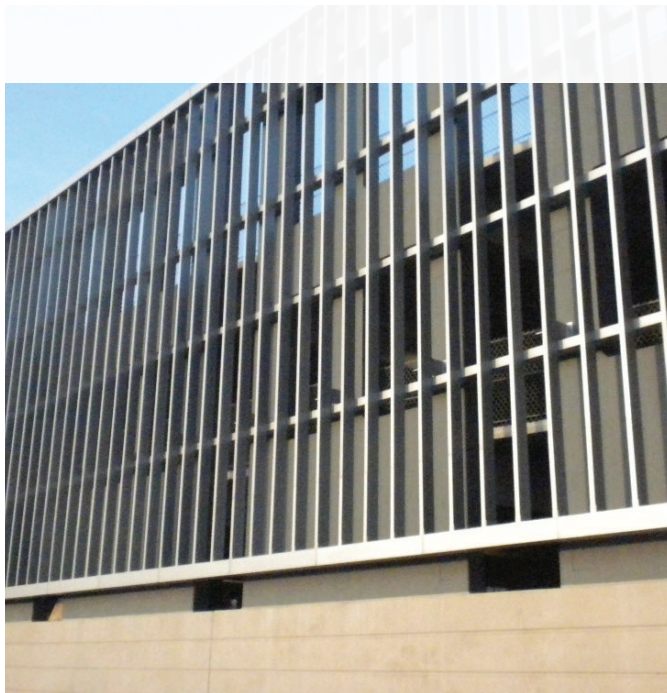
Back-lighting adds color and helps to create a dramatic effect

ASSEMBLY TYPES



GRILLE ASSEMBLIES

Grilles attach to the building substrate and create a visual screening from the building behind. These can be assembled with an array of tube and solid metal shapes, or water and/or laser cut to create patterned effects.





FIN ASSEMBLIES

Fin assemblies can be made of Custom Formed elements, Extruded, or structural shapes to form a unique grid pattern.

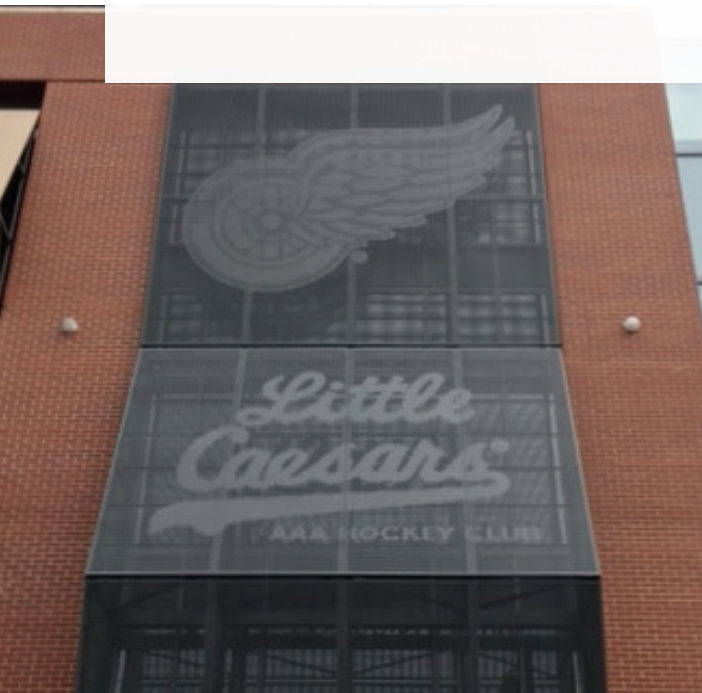


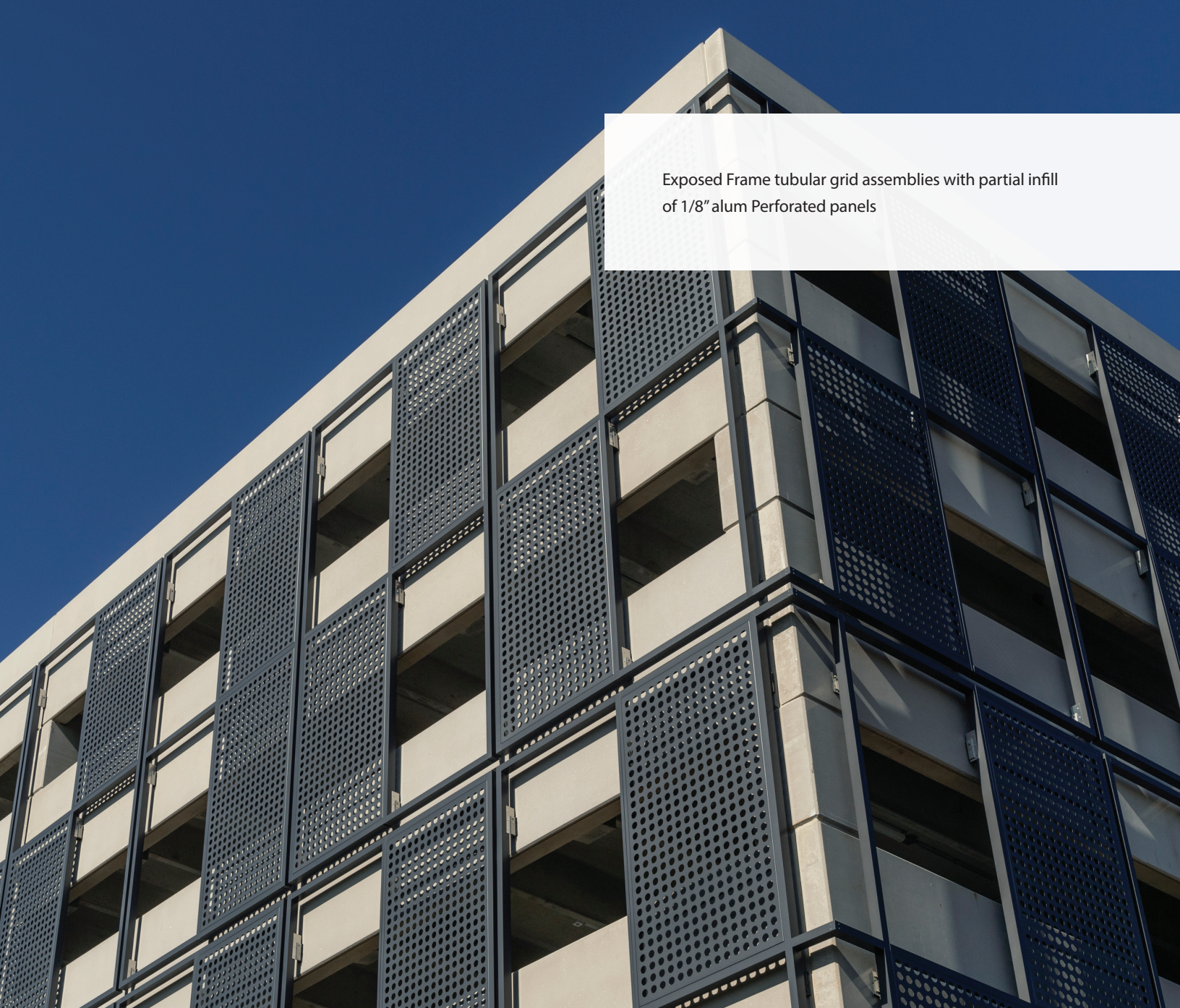
INFILL OPTIONS




PERFORATED PANELS

Perforated panels can allow for proper airflow, visual screening, or other lighting effect. This can be accomplished by varying the perforation hole sizes or the pattern by using a straight, random, or staggered pattern or even custom pattern to create an image. The holes can also vary in shape by using rounds, squares, and oblong shapes to name a few.





Exposed Frame tubular grid assemblies with partial infill
of 1/8" alum Perforated panels



Factory Unitized panel assemblies with concealed tube
frame and multiple panels in alternating perforation pattern

ALL-METAL CONSTRUCTION

When combined with our façade cladding products – Omniplate™, Arcwall™, and Ameriplate™ – the designer can use a singular finish for all metal elements, visually unifying the façade. For example, walls, canopies, and column cladding can be confidently color-matched with roof trellises, grilles, and screenwalls.

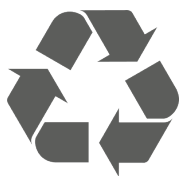
All Metalwërks systems are made exclusively from solid metal – no plastics or composite materials are used.

Metalwërks avoids all plastics because:

- We do not want to contribute to the production and dissemination of petroleum-based plastic materials as they are noxious, toxic when burned, and often combustible
- Plastics rely on the production of hydrocarbon-laden feedstock components
- Plastics are harmful to watersheds and landfills

Metalwërks uses only high-quality metal because:

- Aluminum and stainless steel are highly valued materials and are widely recycled – no scrap goes into waste streams or landfills
- The metals we use contain a high percentage of recycled content





EDITION

EDITION

METAL SUBSTRATE AND FINISH OPTIONS

Aluminum Plate

- 3003-H14 aluminum alloy-temper
- Thickness: 0.125" (3.18mm) standard, 0.188" (4.78mm), 0.25" (6.35mm) options – consult with Metalwërks for additional options.
- Finishes: Kynar® or architectural TGIC Polyester powder coating

Stainless Steel

- T304 or T316 for enhanced corrosion resistance
- Thickness: 14 gauge (0.078", 1.98mm) standard, 11 gauge (0.125", 3.18mm), 12 gauge (0.109", 2.78mm), 16 gauge (0.063", 1.60mm) options
- Finishes: #4, #6, #8 and non-directional satin in smooth or custom embossed patterns

PERFORATED OPTIONS/PATTERNS

- Subject to material selections, conventional round, oblong, or square holes
- Custom tool patterns and random spacing to match graphic designs
- Available with non-perforated borders

WIRE MESH OPTIONS

- Custom and standard aluminum or stainless steel weave patterns
- Opening areas: opaque to 80% open – standard 1", 1.5", 2" square options
- Mounting methods with integrated mullions: Inset or Outset
- Finishes: Kynar®, anodized aluminum, or architectural TGIC Polyester powder coating

EXTRUDED OPTIONS

Tubular Aluminum

- Square standard sizes: 1" x 1" up to 6" x 6"
- Rectangular standard sizes: 1" x 2" up to 2" x 8" – customizable up to 12" deep
- Round sizes: 1" - 6" diameter
- Custom profiles & sizes: Available in lot sizes of 1,000 ft² minimum
- Custom airfoil, trapezoid, or tapered styles

FORMED OPTIONS

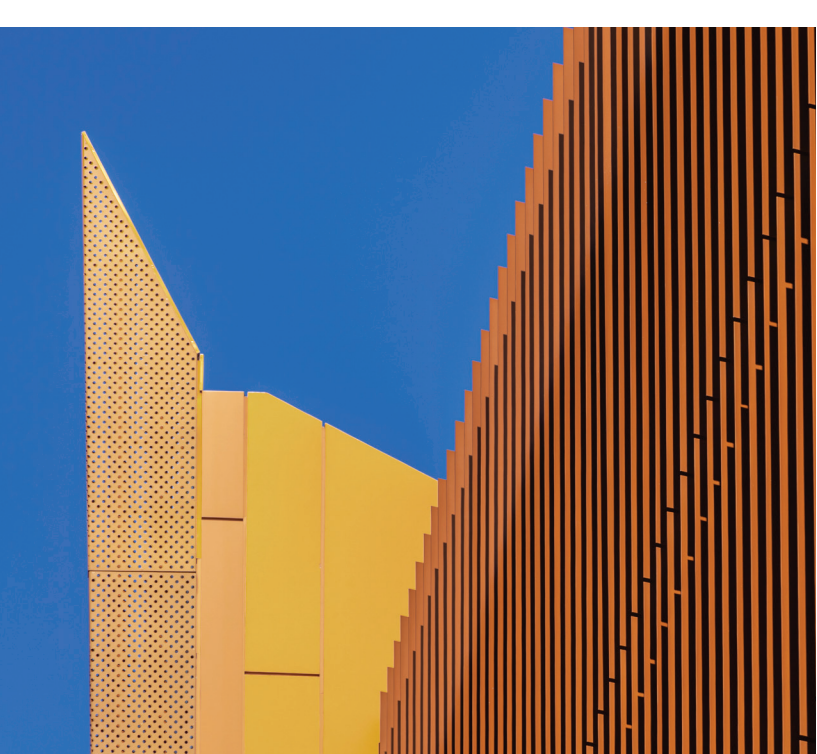
Aluminum Plate

- 3003-H14 aluminum alloy-temper
- Thickness: 0.125" (3.18 mm) standard, 0.188" (4.78 mm), 0.25" (6.35 mm) options – consult with Metalwërks for additional options.
- Finishes: Kynar® or architectural TGIC Polyester powder coating

FLAT PLATE OPTIONS

Aluminum

- Thickness: 0.125" - 1"
(dependent upon gauge and geometry)



 **Metalwërks**[®]
Architectural Plate Systems

200 Gale Lane
Kennett Square, PA 19348
metalwerksusa.com
800-321-7816