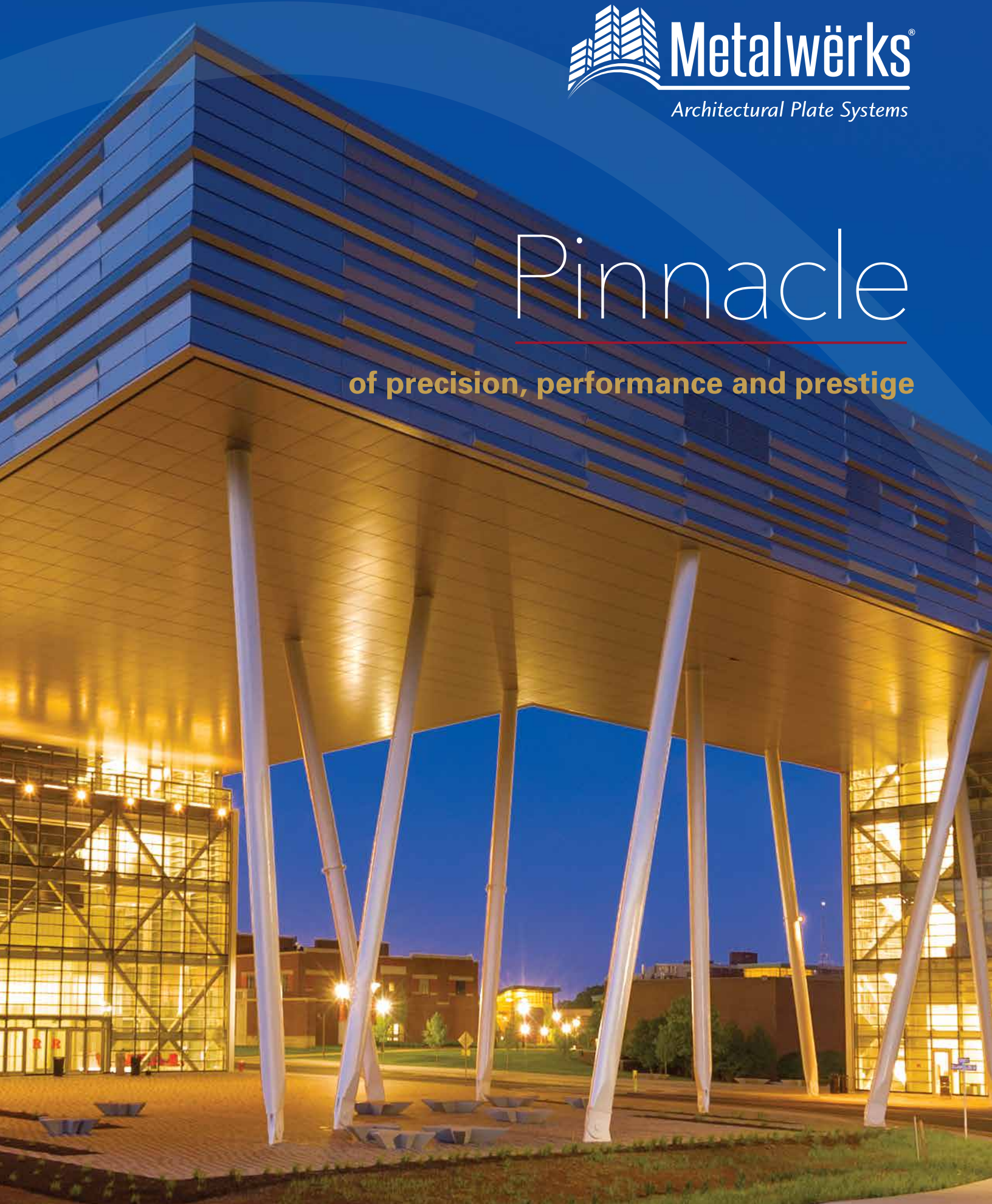


Pinnacle

of precision, performance and prestige



welcome to Metalwërks

Feel free to unleash your imagination

The real beauty of designing building exteriors in solid metal plate is that virtually anything is possible - in form, color, texture, and function. This is why Metalwërks strives to impose as few design limitations as possible for all of its innovative architectural plate systems. These systems intelligently leverage the material advantages of plate to provide architects the means to more easily and economically achieve visually compelling buildings that endure for decades and perform exactly as planned.

Explore Metalwërks now and discover a world of new possibilities you can only achieve in metal plate.

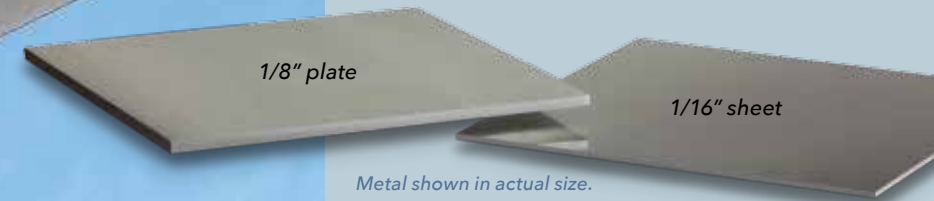
Metalwërks is truly unique among exterior metal building product manufacturers.

Prior to operating exclusively as a manufacturer for more than 30 years, the company served as both a fabricator and installer of metal plate systems. Through these decades of real-world experience, Metalwërks both innovated and perfected the products and systems it manufactures today. Equally important, the company finely honed the comprehensive support services it provides both designers and contractors to efficiently speed projects to beautiful completion. With Metalwërks, you'll discover the world's most complete and integrated portfolio of exceptional wall systems, sunshades, canopies, trellises, screenwalls, column and beam covers, customized enclosures, and so much more.

Select Metalwërks as your single-source architectural metal systems partner today and together let's create the remarkable, efficient, and enduring buildings of tomorrow.

materially Superior

Other cassette-type metal panels on the market are just half as thick as plate, limiting size, flatness, formability, and durability.



Metal shown in actual size.

Minimally, metal plate must be at least 1/8" thick.

How Plate Stacks Up

To qualify as plate, Metalwërks metals meet a minimum thickness or gauge. Compare the significant difference of thickness between Metalwërks plate and the sheet metals used for other all-metal panelized wall systems. The robust nature of plate imparts wall panels with significantly more strength, durability, and visual perfection than thinner metals.

Solid. Singular. Superior. Metalwërks wall systems and architectural features are manufactured almost exclusively from solid metal plate, including aluminum, stainless steel, and zinc. This results in far stronger and more durable products, while allowing for virtually unlimited geometries - from dead flat, to complex curvilinear and three-dimensional forms.

The innate strength of plate eliminates the need for adhering metal with other materials such as plastics or foams, making Metalwërks systems safer and far more sustainable, especially considering the ease with which Metalwërks products are recycled at the end of their remarkably long service lives. In addition, 100% of the scrap from the manufacturing and fabrication processes is recycled.

And when it comes to colors and finishes, the sky is the limit. As Metalwërks architectural plate systems are finished after they're fabricated, a designer can choose any color or finishing system desired - mixing and matching color without added cost or required minimums.

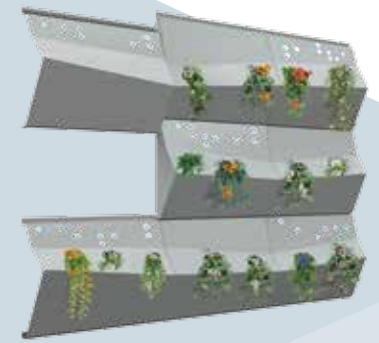


inset photo:
University of Kentucky Medical Center,
Lexington, KY
A.M. Kinney, GBBN Architects

lasting Relief

Sculpted™ 3D Rainscreen System*

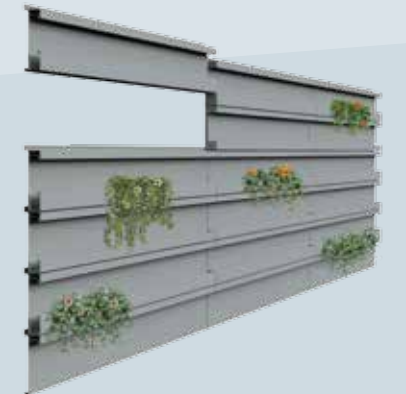
Metalwërks Sculpted provides unprecedented dimensions of articulated form and integrated functionality, more than any other wall system on the market today. Available in three unique design schemes - Minimal, Ribbon, and Parametric - each lends unique and intriguing forms, rhythms, and textures to a wall expanse and some may be installed horizontally or vertically. Better still, Sculpted 3D wall system is engineered for optional integrated vegetative planters and irrigation for living walls. And optional integrated LED lighting can be added for a stunning wall washing effect or for compelling backlighting through designer-defined CNC pattern cut panel perforations.



Parametric



Ribbon



Minimal

Applications for Sculpted

Metalwërks Sculpted 3D is a high-performance drained and back ventilated rainscreen wall system that can be used across the entire building facade. Other applications include:

- Prominent or feature exterior walls
- Demising/privacy walls
- Interior lobby spaces in atria or clerestory spaces
- Exterior/interior facades for large public buildings such as stadiums, hotels, convention centers, airports, and other transit centers
- Public gathering or convocation spaces at higher education facilities
- Living wall surfaces and feature elements
- Kitchen/herb gardens for restaurants, bars, and public plazas
- Lighted feature walls

* Patent Pending

photo: Rutgers Business School, Livingston, NJ • TEN Arquitectos

enduring Freedom of form

Arcwall™ Rainscreen System

Metalwërks' proven Arcwall system combines unprecedented design freedom with outstanding performance. Arcwall panels - face and returns - are formed entirely from a single sheet of metal plate. Corner seams are welded and meticulously ground smooth to a seamless monolithic appearance. Panels can be flat, curved, or manufactured with a custom three-dimensional form according to your vision. Variable panel reveals - both horizontal and vertical - up to 2" are also available for added visual rhythm.

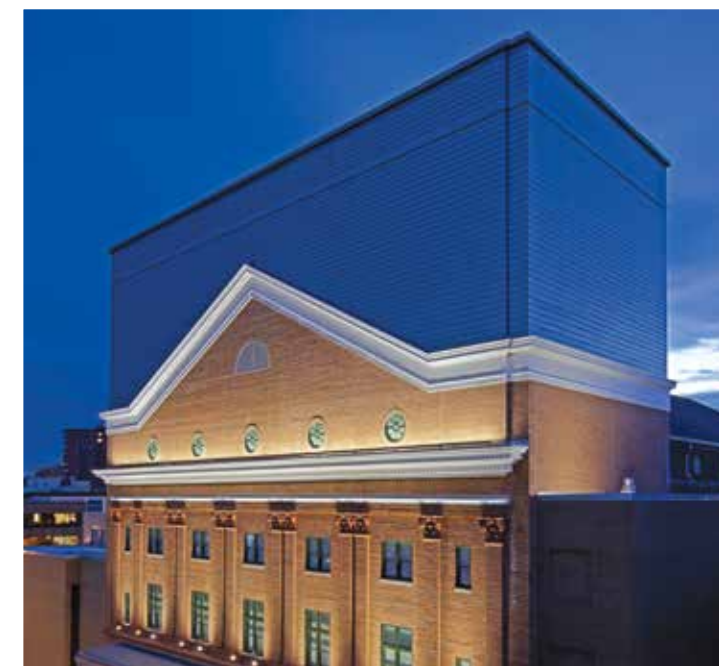
Arcwall is available in two performance options. Arcwall is a drained and back ventilated rainscreen. For increased protection from water penetration, Arcwall Advanced achieves pressure-equalized rainscreen performance per AAMA 508-07 test protocols.



inset photo: UMB BioPark, Baltimore, MD • Gaudreau, Inc.

Econowall™ Rainscreen System

For areas of a building that may not require the brawn of metal plate cladding - soffits for example - or where cost reductions are desired, Metalwërks Econowall is an excellent choice. Compared to Metalwërks plate-based systems, Econowall rainscreen panels are made from lighter gauges of aluminum, stainless, or zinc that visually integrate with other Metalwërks wall systems. And, like Arcwall panels, Econowall panels may be flat or formed into three-dimensional shapes.



inset photo:
Lyric Opera House, Baltimore, MD
RCG Architects

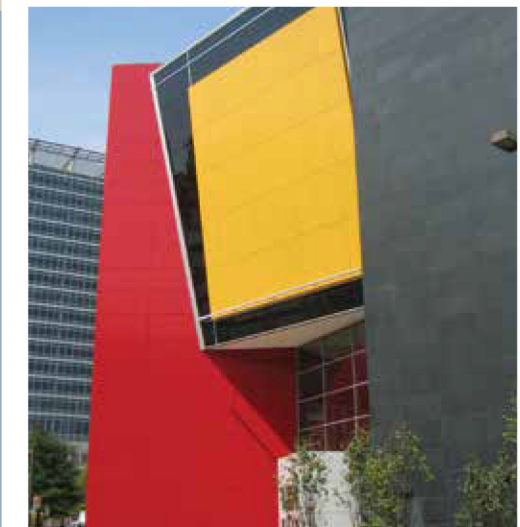
photo: New Jersey Public Health, Environmental and Agriculture Laboratory, Ewing, NJ • HOK

efficient Floating effects



Arcwall™ Spline & Shiplap Rainscreen Systems

Efficiency and fascinating free-floating effects are hallmarks of Metalwërks Arcwall Spline & Shiplap wall systems. Unlike the traditional Metalwërks Arcwall panels - where plate is folded ninety degrees to create panel edges - with Spline & Shiplap systems, the cut edges of the faceplate material are the panels' edges, a capability in metal you can only achieve with plate. With Arcwall Spline & Shiplap panel attachment hardware concealed from view, architects achieve a floating panel effect. The fabrication efficiency of these panels, combined with Metalwërks' simplified panel attachment options that speed installation, make for a highly competitive, high-end rainscreen wall system. Arcwall Spline & Shiplap may be flat or curved. Two-dimensional geometries of panel facings are virtually limitless and panels may be installed in any direction.



100% Made Sensibly in America

Metalwërks takes significant pride in its high quality products and the outstanding projects on which architects showcase them so well. The company is equally proud to be 100% U.S. owned and operated. Metalwërks, its suppliers, service providers, and vendors, support hundreds of jobs in the economy.

inset photo:
Reginald F. Lewis Museum of African American History and Culture, Baltimore, MD
CallisonRTKL Inc., Perkins+Will

sealed

Protection

Omniplate™ Barrier Wall System

Unlike rainscreen systems, barrier wall systems are intended to prevent both air and water from infiltrating behind wall panels. Metalwërks Omniplate barrier wall system provides two options. Omniplate 2510 is a dry-sealed system and 1500 a more economical wet-sealed solution. Of course, each system is made from solid metal plate in your choice of aluminum or stainless steel. Omniplate panel faces and returns are formed from a single piece of plate and panels can be flat or curved. Omniplate 1500 can also be three-dimensional in form. Plus, Omniplate 1500 may be installed vertically as well as horizontally for added flexibility. Omniplate panels structurally and visually integrate seamlessly with other Metalwërks wall systems, allowing architects to mix systems according to location and application.



inset photo: *Lincoln Park Terrace, Washington, D.C. • Nelson Architects*



Metalwërks at Your Fingertips

Visit Metalwërks online today at www.metalwerksusa.com for project case studies and complete product information, including data sheets, CAD drawings, and specifications.

inset photo:
*The Liberty Bell Pavilion, Philadelphia, PA
Bohlin Cywinski Jackson*

photo: *University of MD Eastern Shore, Princess Anne, MD • RCG Architects, Ellerbe Beckett*

custom architectural

Features

In addition to metal plate wall systems, Metalwërks manufactures a wide variety of custom architectural features in materials and finishes selected to perfectly match or elegantly contrast with Metalwërks wall systems. More importantly, all Metalwërks architectural features are made with the same uncompromising attention to detail and structural efficiency for ease of installation and a maximum, trouble-free service life.



inset photo (above):
H.D. Woodson High School, Washington, D.C.
Cox Graae + Spack Architects

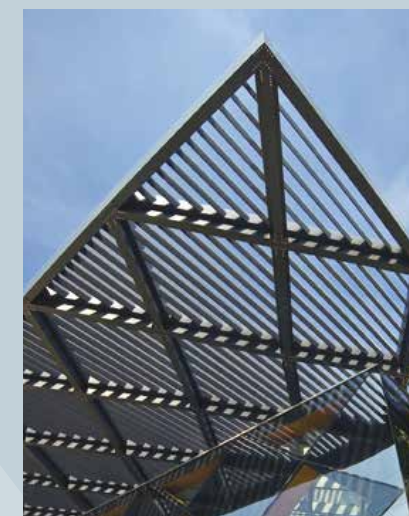
main photo:
Morgan State University School of Business & Management, Baltimore, MD
KPF, Ayers Saint Gross Architects

opposite page: (t-b):
Francis A. Gregory Library, Washington, D.C.
Adjaye Associates

Smithsonian National Air and Space Museum, Chantilly, VA
HOK

Johns Hopkins Hospital Clinical Complex, Baltimore, MD
Perkins+Will

Bush International Airport, FIS Building, Houston, TX
PGAL



Sunshades

Designed to integrate seamlessly with Metalwërks wall systems, Metalwërks® Sunshades may be configured horizontally or vertically as fins. Choose from a wide variety of shading elements including formed or extruded metal profiles, perforated metal, translucent panels, woven wire mesh, expanded metal, or bar grille.



Trellises

Enhance public gathering spaces, provide shade, or add texture to facades or streetscapes with Metalwërks® Trellises. Available as free-standing structures or cantilevered assemblies, Trellises may be located at ground, roof, or plaza levels of a building. Choose from a wide variety of shading elements including formed or extruded metal profiles, perforated metal, translucent panels, woven wire mesh, expanded metal, or bar grille.



Screenwalls

Engineered to ensure structural integrity of the primary building structure, Metalwërks® Screenwalls are manufactured from a wide variety of materials. These include formed or extruded metal profiles, perforated metal panels, woven wire mesh, bar grille, or custom-profiled extrusions.



Canopy Cladding

When made from solid metal plate, Metalwërks® Canopy Cladding panels may be flat, curved, or take on three dimensional forms, providing the ultimate seamless appearance and performance with Metalwërks wall systems. Formed metals, architectural grilles, lighting, speaker grilles, and other elements are easily integrated as well.

Column and Beam Cladding

Beyond ordinary cylindrical or square enclosures, Metalwërks® Column and Beam Cladding is available in virtually any geometry, as it too is manufactured from solid metal plate. Enclose any vertical, sloped, or horizontal structural member - concrete, structural steel, and stud backup - and beautifully integrate with Metalwërks plate wall systems.

Custom Enclosures

Beautifully conceal MEP systems, structural elements, or conveyor systems within occupied spaces with Metalwërks® Custom Enclosures. Engineered with internal supports to accommodate interior clearances, Custom Enclosures provide stable and efficient installations. Also, these enclosures may be integrated with speakers, lighting fixtures, fire extinguisher cabinets, electric power, telecommunication devices, and more.

engineered for maximum Efficiency



photo: Towson Town Center, Towson, MD • Jacobs Engineering Group, Inc.

Metalwërks founders and managing partners combine decades of real-world construction and engineering experience. This know-how is revealed in several ways: through Metalwërks' more intelligent and efficient system engineering that reduces materials and simplifies installation; the company's ability to provide valuable and expert construction consultation; and in how Metalwërks products are painstakingly manufactured and delivered to a jobsite.

Precision-Manufactured Ready to Install

Metalwërks architectural plate systems are manufactured in the factory ready to install at the jobsite, with often no field rework or modification required. To accomplish this, Metalwërks operates with a high degree of coordination with adjacent building trades and will work closely with your building team to ensure success.

Flawless Finishes

Metalwërks architectural plate systems are meticulously prepped for seamless aesthetics and weathertight performance. Then, when applicable, products are sent to a finishing plant to receive high-performance color coatings. This finishing process ensures visual uniformity, long-lasting color retention, complete panel coverage that fully wraps edges for enhanced durability, and the ultimate in long-term protection against corrosion. Metalwërks architectural plate systems are offered in any color imaginable with little impact on cost and with no premiums or minimum quantities for special colors.

Expert Delivery and Coordination

Product and all required installation accessories are delivered to the jobsite in a well-organized manner and coordinated with a customer's sequence of erection and priorities. Metalwërks customers repeatedly report that Metalwërks provides the highest quality, most detailed and coordinated shop drawings in the industry. Metalwërks collaborates with your team to provide layout and helpful installation guidance to ensure a fast and efficient installation. Metalwërks' project management team is also available to answer any questions any time during installation to ensure your project progresses smoothly.



inset photo: National Council of La Raza, Washington, D.C. • EwingCole

expert Service & Support for the entire building team

Creating high-performance building exteriors is a team effort and Metalwërks is an important team member, not merely for precision manufacturing, but by providing valuable expertise to the building team wherever and whenever it's needed.

System Consultation

The Metalwërks design team can help you select the right system to meet your project's aesthetic, performance, and budget requirements. This includes system type, material selection, colors and finishes, sustainable design objectives, integrated lighting, and vegetative wall integration.



Engineering Support

Under a traditional delegated design scope, Metalwërks provides engineering support to verify required structural attachments and deflection limits for all of its products. Metalwërks can also assume sole responsibility for secondary support requirements in a design assist/design build capacity.

Construction Methodology

Metalwërks' extensive background on installed projects is an impressive body of work illustrating the company's rich contracting pedigree. This experience provides your building team a resource of real-world know-how for construction methodologies and systems that provide the highest level of efficiency, productivity, and safety, while minimizing jobsite disruption and ensuring that your Metalwërks systems are installed perfectly.

Expert Delivery

Product and all required installation accessories are delivered to the jobsite in a well-organized manner with clear instructions for staging of crates for fast and efficient installation.

Metalwërks Wall Systems

	Performance				Materials			Panel Forms			Panel Returns			Panel Dimensions (inches)			Panel Orientation	
	Drained and Back-Ventilated Rainscreen	AMMA Pressure-Equalized Rainscreen	Dry-Sealed Barrier Wall	Wet-Sealed Barrier Wall	Coated Aluminum	Stainless Steel	Zinc	Flat	Curved	3D	Formed	Flat	Back-Scored	Length	Width	Depth	Horizontal	Vertical
Sculpted																		
Minimal	■				■	■	■			■	■		■	24-160	24-66	Varies	■	■
Ribbon	■				■	■	■			■	■		■	48-160	24-48	Varies	■	
Parametric	■				■	■	■			■	■		■	24-160	24-50	Varies	■	■
Arcwall																		
Standard	■				■	■		■	■	■	■		■	12-160	12-65	1.75	■	■
Advanced	■	■			■	■		■	■	■	■		■	12-160	12-65	3.75	■	
Spline & Shiplap	■				■	■		■	■			■		12-240	12-72	2, 2.25, 2.75	■	■
Omniplate																		
2510			■		■	■		■	■			■		12-240	12-72	2.25	■	
1500				■	■	■		■	■	■	■		■	12-160	12-65	1.75	■	■
Econowall	■				■	■	■	■		■	■			12-160	6-36	1.5	■	■



Metalwërks[®]

Architectural Plate Systems

200 Gale Lane
Kennett Square, PA
19348
metalwerksusa.com
800-321-7816

